

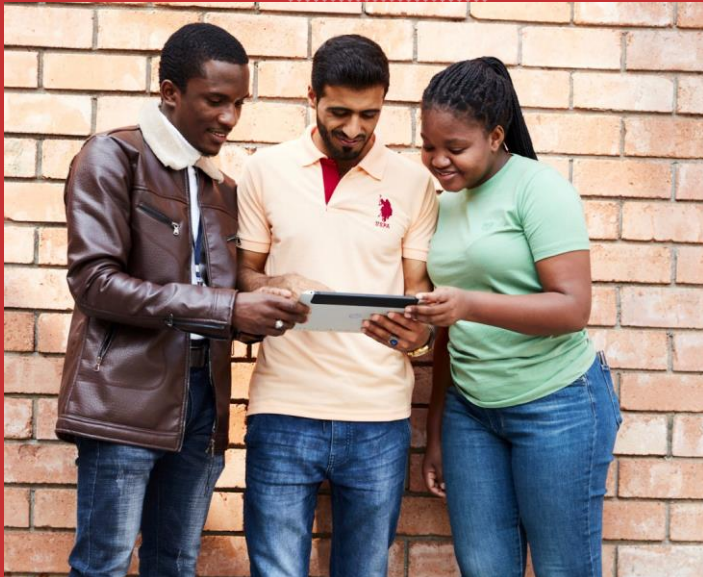


SYMBIOSIS INTERNATIONAL UNIVERSITY - DUBAI



Legacy of more than 50 years of Excellence in Quality Education

Undergraduate Catalog 2025-26





॥वसुधैव कुटुम्बकम्॥

SYMBIOSIS

INTERNATIONAL UNIVERSITY

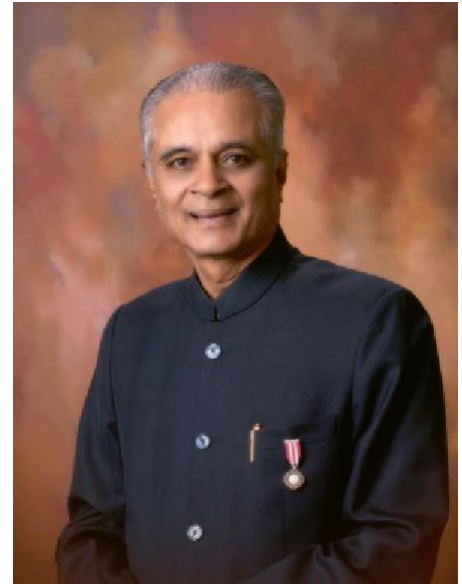
The World is One Family

INDEX

Chancellor's Message.....	5.....
Pro Chancellor's Message.	6
Vice Chancellor's Message.....	7
Executive Director's Message.	8
Institution's History.....	9
Overview of Parent Institution.....	10
SIU, Dubai – Vision and Mission.....	13
Rankings and Accreditation.	15
International Partners.....	16
Undergraduate Programs Offered at SIU-Dubai (Accredited by CAA, MOHESR, UAE in 2024 & in 2025).	20
Admission and Important Dates	21
Scholarships.	25
Code of Conduct.....	26
Academic Integrity	28
Program Structure (BAMC, BBA, BCA) with Financial Policies.....	30
Program Structure (BSc in Psychology Honors, B.Com. (Honors), BBA Dual Degree, and Bachelor of Technology in Computer Engineering), BBA (Honors) with Financial Policies.....	62
Refund Policy.....	107
Grading System.....	108

Chancellor's Message

Prof. (Dr.) S. B. Mujumdar
 Founder & President, Symbiosis
 Chancellor, SIU



Symbiosis was established in 1971, with the motto of 'Vasudhaiva Kutumbakam' the world is one family. Dedicated to promoting international understanding through quality education, Symbiosis is happy to now bring its commitment to a globally valued, multidisciplinary education to students in the UAE.

The university's strong global linkages are testament of its proactive approach to providing an internationalized learning experience to all its staff and students. The same standards of teaching-learning-research and pastoral care will create a conducive learning environment at its SIU, Dubai campus, leading to overall student well-being.

We look forward to welcoming students from Africa and Asia, in addition to the large Indian diaspora in the Gulf, to our new campus. This diversity will enrich the educational experience by bringing together perspectives from different cultural backgrounds. The focus on helping students

realize their potential aligns with our broader goal of education, which is not just about imparting knowledge but also empowering individuals to reach their personal and professional aspirations.

Our emphasis on multidisciplinary education is forward-thinking. Encouraging students to choose courses from multiple disciplines and broaden their perspectives is rooted in the need to be aware of the

interconnectedness of knowledge in the real world today. The overarching goal of creating globally valued graduates indicates our commitment to preparing students for success in an increasingly interconnected and globalized world.

This emphasis on diversity, multidisciplinary education, and international engagement will help us position SIU, Dubai as a hub for holistic and globally centered learning.

I extend a warm welcome to students to become a part of our rich legacy and experience the highest standards of learning at Symbiosis.

Pro Chancellor's Message

Dr. Vidya Yeravdekar
Principal Director, Symbiosis
Pro Chancellor, SIU



Symbiosis upholds its motto “Vasudhaiva Kutumbakkam” the world is one family in all its pursuits. The diverse backgrounds of the students who come here from 85 countries from all across the world, contribute to an international environment. The wide milieu of ideas that are brought to the table through the interactions and collaborations among students both inside and outside the classroom are contributive in enhancing the students' intellectual acuity.

The establishment of the Dubai campus is a significant step towards enhancing the inclusivity and diversity, that is predominant in all the Symbiosis' campuses. The University's global outreach and dedication to creating global citizens has been a guiding force behind its several initiatives.

As one of the largest Universities in India, Symbiosis has strong global linkages and an educational portfolio that boasts of excellent infrastructure, well-equipped classrooms, accommodation and an environment that assists students in realising their potential while embracing diversity. The interdisciplinary studies will allow students to choose from across multiple disciplines thus broadening their perspective and helping them gain knowledge of various domains, which makes them more adaptable to a global environment. I am sure that students from the Gulf region, West Asia and Africa, and a huge Indian diaspora in the Gulf Region, will benefit from this campus.

Through the multidisciplinary education at the Dubai Campus, we aim to create globally valued graduates and expose students and faculty to international, intercultural and comparative aspects.

On behalf of the University, I wish you success and welcome you to the Symbiosis family!

Vice Chancellor's Message



Dr. Ramakrishnan Raman
Vice Chancellor, SIU

Dear Prospective Students and Parents,

It is with great pleasure and enthusiasm that I extend my warmest greetings on behalf of Symbiosis International University as we embark on a momentous journey to establish our first-ever campus outside India, right here in the vibrant and dynamic city of Dubai, United Arab Emirates.

Symbiosis International University has a rich legacy of over five decades, nurturing academic excellence and fostering a global perspective among students and faculty. Founded in 1971 by the visionary Prof. Dr. S.B. Mujumdar, our institution has been a second home for countless international students, embodying the ideals of "World as One Family" derived from Vedic thought.

The name 'Symbiosis' epitomizes the harmonious relationship we share with our international students, representing a mutually enriching bond between India and the global student community. Committed to promoting international understanding through the provision of top-tier education, we have proudly welcomed students from more than 85 countries, creating a truly diverse and vibrant learning environment.

Our journey continues as we extend our footprint to Dubai, the thriving heart of the United Arab Emirates. This new campus will offer a range of courses initially focusing on Management, Computer Studies, and Media. However, our vision is to expand into a broader spectrum of disciplines, including Engineering, Humanities and Social Sciences, Education, Medicine, and many others, ensuring a comprehensive educational experience for our students.

As we set forth on this exciting endeavor, we are committed to upholding the same standards of academic excellence, cultural diversity, and innovation that have defined Symbiosis throughout its history. Our Dubai campus will not only provide world-class education but also foster a dynamic and inclusive learning atmosphere where students from diverse backgrounds can thrive and excel.

I invite you to explore this catalog and discover the myriad opportunities that await you at Symbiosis International University in Dubai. Whether you are a prospective student or a parent seeking the best education for your child, we are here to support your aspirations and provide a holistic learning experience that will shape your future.

We look forward to welcoming you to our Symbiosis family and to the exciting educational journey that lies ahead. Together, let us embrace the spirit of knowledge, exploration, and global collaboration.

Executive Director's Message

Dr. Anita Patankar
Executive Director
SIU-Dubai



Hello,

It is with a sense of pride and delight that I welcome you all to the newest branch campus of Symbiosis International University (SIU) in Dubai UAE, which is also its first overseas campus. Symbiosis carries a legacy of over five decades having carved out a unique niche for itself on the Indian educational landscape for its scholarly quality, high teaching & learning standards, and world-class infrastructure. Symbiosis is a highly ranked University and a first-choice institution for a large number of bright students, not only from within India but from around the globe earnestly following its vision of "Promoting International Understanding through Quality Education". Synonymous for distinctive higher education options, Symbiosis hosts over forty thousand students, pursuing various under-graduate, graduate and doctoral programs in business management, computer technology, medical science, mass-communication, law, humanities and many more, from eighty-five countries at its multiple campuses across India that keep buzzing with academic, cultural and sporting activities all around the year.

At the Dubai campus, which is centrally located at the Dubai Knowledge Park, Symbiosis was established with a launch of four programs in Business Management (BBA & MBA), Computer Application (BCA) and Media & Communication (BAMC) with futuristic focus areas such as Artificial Intelligence & Machine Learning, Data Science & Data Analytics, Strategic Management & Leadership, Innovation & Entrepreneurship, Digital Marketing & Advertising. Now, Symbiosis Dubai has added five more programs such as B. Com (Honors), BSc in Psychology (Honors), Bachelor of Technology in Computer Engineering, BBA (Honors), and a dual degree in BBA with Aston University UK. The curriculum is designed to inculcate knowledge, skills, competencies, and responsibility attributes (as per QF Emirates 2024) which equips you with futuristic tools, techniques and attitude to face the fast changing and often unpredictable world head-on, and succeed in pursuit of your chosen profession. Moreover, the new programs also embed the professional practices, and evolving market needs to maximize student experience.

Symbiosis, following its core values of 'Vasudhaiva Kutumbakam' (the world is one family) and Diversity & Inclusion amongst others, is committed to bring to Dubai a distinctive dimension of academic rigor and practice, that matches the spirit of the dynamic and diverse environment of the United Arab Emirates. With the approval of the UAE Ministry of Education, qualifications offered by SIU Dubai, shall not only be internationally recognized but truly global in their applicability anywhere in the world.

On behalf of the Symbiosis International University, I invite you to join this unique family of professionals & leaders who are contributing meaningfully to their society and global community for decades. A wonderful opportunity awaits you here to take you on a path of delightful learning. I wish you all the very best in your academic and professional pursuits.

An Affair that Founded Symbiosis

The journey of a thousand miles begins with a single step. But, it is the first step that involves deliberation and much hesitation. The Symbiosis journey however began with a surge of enthusiasm spurred on by an incident that, in itself, makes a poignant tale.

"It was an afternoon on a hot day. I was standing near the window of my house overlooking the first hostel block, of which I was the rector. A strange thing happened. A girl walked up to the window of the boys' hostel room, quickly handed over something and disappeared. My curiosity was aroused and I kept watching the girl walking up to the window day after day and suspected, like any other rector would, that an affair was afoot. So, one day, I made up my mind and walked up to the door and knocked. When the door opened, I saw a Mauritian student lying in bed. His face was pale and his eyes seemed to have sunken low. I was puzzled." "When I turned to the boy for an explanation, he said, 'Sir, I have an attack of jaundice & I'm feeling extremely weak. I cannot stand up, nor walk a few steps. A girl from my country brings me food. However, since ladies are not allowed to enter the boys' hostel, she hands over the tiffin box through the window.' I was stunned. After all, it wasn't the type of 'affair' I had expected. I was very much pained & decided something had to be done about this. That was the instance, the golden moment that Symbiosis was born. "Symbiosis is a term in life science, meaning 'living together of two different organisms, for the benefit of each other'. Dr. Mujumdar, himself a professor of botany, thought this name apt for the institution. Thus, the institution was founded to alleviate the problems faced by foreign students coming to India. At the time, these problems included - accommodation, meals, medical care, guidance, coaching, information about the city, etc. Symbiosis has come a long way since then.

Today it is home to students from more than 85 different countries. These students are offered the best learning resources, industry

exposure, a strong international students' alumni network, a global recognition, and above all, a truly enriching Indian experience





SYMBIOSIS INTERNATIONAL UNIVERSITY, PUNE, INDIA

Symbiosis International University is a vibrant ecosystem where cultures interweave, minds expand, and the future takes shape. Founded in 1971 with the vision of "Promoting International Understanding through Quality Education," Symbiosis has become a beacon of multicultural learning, welcoming students from over 85 countries. Symbiosis draws inspiration from the ancient Vedic philosophy of "*Vasudhaiva Kutumbakam*," meaning "The World is One Family."

Symbiosis International University was established in 2002, and has campuses in six cities across four states, each pulsating with the energy of international students and academic excellence. This spirit of inclusivity manifests in every aspect of the university, from its diverse student body to its commitment to building bridges between nations. The University offers a kaleidoscope of academic programs, ranging from undergraduate degrees to doctoral studies, diplomas and certificate programs. Whether your passion lies in management, law, computer science, medical and health sciences, media communication, design, engineering or humanities, Symbiosis International University has a path for you.

The university is a champion of research and innovation, fostering a culture of exploration and discovery. The university boasts dedicated research centers where faculty and students collaborate on ground breaking projects, pushing the boundaries of knowledge. The university provides more than just academic rigor; it cultivates a vibrant student life filled with opportunities for growth and connection. From cultural events and sports teams to social initiatives and service learning projects, students learn, thrive, and build lifelong friendships in a diverse and dynamic environment. Symbiosis is deeply committed to the cause of "Health for All."

Choosing Symbiosis International University is choosing more than just a university; it's choosing a community, a family, and a world of possibilities. Come experience the magic of a truly international education, where diversity is celebrated, innovation thrives, and your future takes flight.

Campuses in India



Campus in Dubai

●SYMBIOSIS INTERNATIONAL UNIVERSITY - DUBAI



Symbiosis International University (SIU), Dubai

Vision

Promoting international understanding through quality education

Mission

To nurture a vibrant learning community with a strong focus on integrating local and global practices of teaching-learning-evaluation, research-innovation, global citizenship, and aimed at building a sustainable future.

Graduate Attributes

Attributes	Facilitation and Monitoring	Outcomes
Scholarship: research, inquiry and lifelong learning	Teaching- learning process, curriculum design, updating of curriculum in emerging areas, student centric teaching methodologies, project-based learning, research projects, case studies	Participating in student conferences, publishing research papers/ case studies in student journals, supporting faculty as research and teaching assistants, desire for seeking further higher education
Global citizenship: ethical, social and professional understanding	Projects, internships, field trips, service learning and extension activities, ensuring diversity on campus, promoting social sensitivity offering the 'Vasudhaiva Kutumbakam' SIU Global Citizenship (mandatory) course to all the students	Interest in volunteering and working for social causes, cross cultural sensitivity, ability to work in cross cultural groups, increased cross cultural competence
Eco-literate: sensitivity towards a sustainable environment	Programs/courses related to environment sustainability, participation in activities related to environment/ecology preservation, environment projects and study tours	Environmental understanding and sensitivity among students, involvement in NGOs, and commitment to eco- friendly spaces
Employability: equipped with skills, attributes, leadership and entrepreneurial qualities that society needs; being capable of making a contribution to society through earning a living	Domain specific expertise, training/internship with industry, enhancement and value-added courses, Co-curricular activities. Assessments that include presentations, public speaking and oratory, class leads, team learning and group activities.	Program appropriate placements, entrepreneurial opportunities, good team work skills, work ethic, understanding of corporate /organizational working, successful internships

Core Values

The core values which drive all activities of SIU, Dubai are:

Vasudhaiva Kutumbakam (the world is one family): SIU, Dubai is committed to this all-encompassing principle that aims to promote global citizenship and respect for diversity;

Diversity and Inclusion: SIU, Dubai is committed to promote diversity and inspires tolerance and embraces inclusiveness;

Integrity and Honesty: SIU, Dubai promotes the values of honesty, integrity and trustworthiness;

Transparency and Accountability: SIU, Dubai follows principles of ethics, openness, reliability, and responsibility towards all its stakeholders

Social Commitment and Gender Equity: SIU, Dubai is committed to community engagement and environment sustainability, and being alive and responsive to the needs and challenges of local, national and global communities

Innovation: SIU, Dubai promotes creativity, entrepreneurship and a spirit of inquiry as we work to find solutions to the many shared challenges we face as a global community.



Rankings and Accreditation



Times Higher Education World University Ranking 2025

401 – 600 Band in the World	8th in India
--------------------------------	-----------------

QS World University Rankings by Subject 2025



696 th Globally	51 st Globally for Employer Reputation	3 rd In India for Employee Reputation	5 th In India for Student Diversity	8 th In India for International Faculty
-------------------------------	------------------------------------------------------------	-----------------------------------------------------------	---------------------------------------------------------	-------------------------------------------------------------



U.S. News Best Global Universities Rankings 2025

727 th Globally	10 th in India
----------------------------	---------------------------

THE WEEK-Hansa Research Survey 2025 Rankings



1 st in Private Multidisciplinary Universities in Western India	3 rd among Deemed Multidisciplinary Universities in India
-------------------------------------------------------------------------------	-------------------------------------------------------------------------

Times Higher Education Asia University Rankings 2025



Ranked in 251–300 band

Times Higher Education World University Ranking 2025



601–800 - Band in the World	4 th Rank in India
-----------------------------	-------------------------------

Times Higher Education World University Rankings 2025 by Subject



301–400 th Computer Science	301–400 th Social Sciences	501–600 th Business and Economics	601–800 th Engineering	601–800 th Medical and Health
-----------------------------------	----------------------------------	-----------------------------------------	---------------------------	-------------------------------------

QS World University Rankings by Subject 2025



253rd Globally in Social Sciences and Management	151-200 Globally in Business & Management Studies	301-375 Globally in Accounting & Finance	551-700 Globally in Economics & Econometrics	451-500 Globally in Computer Science & Information Systems
-----------------------------------------------------------------	---------------------------------------------------------------	---------------------------------------------------	-------------------------------------------------------	---------------------------------------------------------------------------

SIU International Partners

The parent institution has multi-level academic partnerships with well ranked universities from across the world. These collaborations are also available for SIU, Dubai faculty and students. A few are listed below:

University / Institute	Country
National Taiwan Normal University	Taiwan
University of Cologne	Germany
Aston University	UK
Universität Hamburg, UHH- Faculty of Humanities	Germany
RUDN University	Russia
National University of Ireland (NUI) Galway	Ireland
Swinburne University of Technology	Australia
University of Adelaide	Australia
University of Queensland	Australia
Jagiellonian University of Kraków	Poland
Bond University	Australia
University of Johannesburg	South Africa
Sungkyunkwan University	South Korea
Deakin University	Australia
University of Ghent	Belgium
University of Cape Town	South Africa
Leiden University	The Netherlands
The University of Waikato (Te Piringa- Faculty of law)	New Zealand
ISEG Lisbon School of Economics & Management	Portugal
Macquarie University	Australia
Loughborough University	UK
KTH Royal Institute of Technology	Sweden
Amsterdam School of International Business- Amsterdam University of Applied Sciences	Netherlands
University of Bristol	UK
University College Dublin	Ireland
Western Sydney University	Australia



Official launch of Symbiosis International University's Dubai International Branch Campus, marking a new chapter in global education and collaboration in the UAE.

SIU-Dubai was inaugurated in November 2024 by

H.E. Sheikh Nahayan Mubarak Al Nahyan, Minister of Tolerance and Coexistence,

H.E. Dr. S. Jaishankar, India's External Affairs Minister,

Prof. Dr. S.B. Mujumdar, Founder Symbiosis and Chancellor SIU, and

Dr. Vidya Yeravdekar, Pro-Chancellor SIU

Institution's resources and physical setting

The parent institution has identified a site for establishing their SIU, Dubai campus. The campus at the Dubai Knowledge Park has modern classrooms, well-equipped computer laboratories, dedicated prayer halls and comfortable staff areas; every detail crafted to support the entire academic journey of the student. An expansive Learning Resource Centre and efficient administrative facilities ensure hassle-free learning, while student services and dedicated support infrastructure guarantee a smooth and enriching experience.

Institutional Licensure and Program Accreditation

[Symbiosis International University Dubai](#) is officially [licensed](#) by the Ministry of Education, United Arab Emirates, to award degrees/qualifications in higher education. All undergraduate degree programs are [accredited](#) by the Commission for Academic Accreditation (CAA) of the Ministry of Education, United Arab Emirates.

[Symbiosis International University Dubai](#) also has an Educational Services Permit from Knowledge Human Development Authority (KHDA).



Academic Calendar – AY 2025-26

Fall Semester 2025	Day	Date	Event
	Mon	01 Sep 2025	Class starts of existing students
	Tue	09 Sep 2025	New students orientation / Class starts
	Mon-Fri	08 Dec 2025 – 04 Jan 2026	Winter Break*
	Fri	16 Jan 2026	Last day of classes
	Mon-Mon	19 – 26 Jan 2026	Semester End Exams
	Tue-Fri	27 – 30 Jan 2026	Back Log Exams
	Fri	06 Feb 2026	Result Declaration (Fall 2025)
	Mon-Fri	09 – 13 Feb 2026	Result Appeal/Re-Sit Application (Fall 2025)
	Thu-Fri	17 – 18 Feb 2026	Re-Sit Exams (Fall 2025)
Internship	Mon-Fri	31 Jan – 29 Mar 2026	MBA Spring 2025 Batch
Spring Semester 2026	Mon	09 Feb 2026	Class starts for existing students / MBA Spring 2026 students' orientation
	Mon-Fri	16 – 29 Mar 2026	Spring Break*
	Mon	30 Mar 2026	MBA Spring 2025 Batch Starts-Sem 3
	Fri	05 Jun 2026	Last day of classes
	Mon-Mon	08 – 15 Jun 2026	Semester End Exams
	Tue-Fri	16 – 19 Jun 2026	Back Log Exams
	Fri	26 June 2026	Result Declaration (Spring 2026)
	Mon-Thu	29 Jun – 02 Jul 2026	Result Appeal/Re-Sit Application (Spring 2026)
	Mon-Wed	06 – 08 Jul 2026	Re-Sit Exams (Spring 2026)
	Mon-Fri	16 Jun – 28 Aug 2026	Summer/Internship
Summer Semester 2026 (For B.Tech. Program)	Tue	16 Jun 2026	Start of Summer Classes
	Wed	15 Jul 2026	Last day of summer semester classes
	Thu-Fri	16 & 17 Jul 2026	Semester End Exams

List of Holidays

List of Holidays		
September 05, 2025- Prophet Muhammad's Birthday	December 3, 2025 - Eid al Etihad	March 18 to 22, 2026 - Eid al-Fitr
October 20 to 21, 2025- Diwali	December 25, 2025 - Christmas	May 26, 2026 - Arafat Day
December 1, 2025 - Commemoration Day	December 31, 2025 - New Year's Evening	May 27 to 29, 2026- Eid al-Adha
December 2, 2025 - Eid al Etihad	January 1, 2026 - New Year's Day	June 17, 2026 - Islamic New Year

Note:

- National and religious holidays can be changed as per govt. instruction
- Any academic dates may change due to unavoidable circumstances
- Changes regarding the above will be communicated through SIU Dubai email
- Students are required to check regularly SIU Dubai emails for the latest updates
- * MBA students will be engaged with internship / placement / career readiness work

Undergraduate Programs Offered Accredited by CAA, MOHESR in 2024

Bachelor of Business Administration-120 credits

- Bachelor of Business Administration
- Bachelor of Business Administration-Accounting and Finance

Bachelor of Computer Applications-120 credits

- Bachelor of Computer Applications - Artificial Intelligence and Machine Learning
- Bachelor of Computer Applications - Cloud Computing
- Bachelor of Computer Applications - Data Science and Data Analytics

Bachelor of Arts in Media and Communication-120 credits

- Bachelor of Arts in Media and Communication - Digital Marketing and Advertising
- Bachelor of Arts in Media and Communication - Public Relations and Corporate Communication

Undergraduate Programs Offered Accredited by CAA, MOHESR in 2025

Bachelor of Science (Psychology) Honors-146 credits

- Bachelor of Science in Psychology - Organizational Psychology
 - Bachelor of Science in Psychology - Counselling Psychology
- Bachelor of Science in Psychology (Honors) - Organizational Psychology
- Bachelor of Science in Psychology (Honors) - Counselling Psychology

Bachelor of Commerce Honors-146 credits

- Bachelor of Commerce (B.Com.) (with ACCA Prep.)
- Bachelor of Commerce Honors (with ACCA Prep.)

Bachelor of Business Administration-Dual Degree with Aston University UK-122 Credits

- Bachelor of Business Administration-Dual Degree with Aston University UK

Bachelor of Technology in Computer Engineering -153 Credits

Technical Electives/Concentration:

- Intelligent Systems
- Computational Intelligence
- Gaming Design and Development
 - Emerging Technologies

Bachelor of Business Administration (Honors) – 149 Credits

- Bachelor of Business Administration (Honors) - Finance
- Bachelor of Business Administration (Honors) - Marketing
- Bachelor of Business Administration (Honors) - Logistics and Supply Chain Management
 - Bachelor of Business Administration (Honors) - Human Resource Management
 - Bachelor of Business Administration - Finance
 - Bachelor of Business Administration - Marketing
- Bachelor of Business Administration - Logistics and Supply Chain Management
 - Bachelor of Business Administration - Human Resource Management

Program Accreditation

Undergraduate programs are [accredited](#) by the Commission for Academic Accreditation (CAA) of the Ministry of Education, UAE.

Admissions

Your Gateway to Success: Undergraduate Admissions at Symbiosis International University, Dubai.

Embark on an enriching academic journey at SIU, Dubai! We offer a diverse range of undergraduate and graduate programs designed to equip you with the knowledge, skills, and confidence to thrive in the field of Business Management, Computer Studies, and Media & Communication.

Fuel your passion, step-by-step:

- Discover your passion:** Find the program that sparks your academic flame and fuels your career aspirations.
- Check your readiness:** Each program has specific entry requirements. Go through the Catalog and ensure you meet the eligibility criteria regarding grades, test scores, and English proficiency.
- Showcase your brilliance:** Gather your academic transcripts, test scores, and glowing recommendations. Make sure everything's clear and in line with our requirements.
- Beyond the Form:** If short-listed, you will be invited to share your strengths in a personal interview. Be ready to showcase your communication skills, critical thinking, and reasons why you'd thrive in the SIU, Dubai community.
- Decision Time:** After a thorough review, we will notify you of our decision. Keep an eye on your email and the application portal for updates.
- Celebrate and secure your seat:** Got an offer? Congratulations! Review the terms, accept within the deadline, and submit any additional documents. Now, get ready for a transformative journey at SIU Dubai!

For admission related queries: email to admissions@siu-dubai.ac.ae

Important Dates	
Applications open	1 st Feb 2025
Last Date for Awarding Scholarships	June 1 st to June 31 st ,2025
Waiting List Announcement	1 st July to 31 st July,2025
Student Visa application date	1 st Aug to 20 th Aug,2025
Applications closing date	25 th Aug,2025
Last date of Payment of 1 st Semester fees	31 st Aug,2025

Undergraduate Admissions

All applications for admissions of students at SIU, Dubai will be verified and routed through an Admission Committee.

Eligibility Criteria:

- **Proficiency in English:** UAE MOE High School English Score or equivalent: 80%
- **Academic Eligibility:** 50% or SIU-Dubai established equivalents by different High School Board/Curriculums
- **Subject Specific Requirements (if Applicable):** Math, Physics, and Chemistry or Biology (UAE *High School Subject Score: 80 % or equivalent*)

Proficiency in English:

1. UAE MOE High School English Score or equivalent: 80%
2. Students who have studied non-MOE curriculum, not instructed in English, are required to submit international standardized test scores.
3. Students who have studied non-MOE curriculum, instructed in English, are not required to prove English proficiency or not required to obtain scores from international standardized tests.
4. Those who do not fulfil the minimum high school English language requirement of 80% have to submit a minimum score of an international standardized test that are approved by CAA, such as follows:

International Standardised Tests (IST)

- IELTS (Academic) 5.0
 - Paper-based TOEFL 500
 - Internet-based (iBT) TOEFL 61
 - Computer-based (CBT) TOEFL 173
 - Any other standardized, nationally or internationally recognized test that is approved by the CAA/Ministry of Education, UAE
- Original scores are a must! Request certified copies, sent directly from the testing organization.

Need a boost? SIU's English bridge course can help if you fall short of the above English proficiency scores. Send an email to admissions@siu-dubai.ac.ae for more details.

Candidates can then join the program after successful completion of this bridge course.

Stay updated! MoE may revise approved tests and scores. Check their website for latest info.

Academic Eligibility: Student must meet Minimum Academic Requirements in Higher School as per Academic Eligibility

Undergraduate Academic Eligibility/ SIUD established equivalents		
S. No.	International High School Boards/ Certificate	Minimum Academic Requirement
1)	Shahadat Al-Thanawiya Al-Amma (UAE Secondary School Certificate Grade 12)	60% at Advanced or Elite Track or 65% at the General Track
2)	Al-Thanawiyyah Al-Aama (For all Arab Countries)	70% in Grade 12
3)	American High School Diploma	Overall Average of Grade "C" (2.4/4.0)
4)	CBSE/HSC/ISC	10+2 or equivalent examinations in any stream from a recognized Board/ University with minimum of 50% marks or equivalent grade in Standard XII (10+2) or an equivalent examination from a recognized Board.
5)	International Baccalaureate Diploma Program (IBDP)	24 points (IB Diploma awarded)

6)	International Baccalaureate Course (Certificate)	Minimum of 24 credits and has passed a minimum of three subjects at Higher Level (HL) and three at Standard Level (SL)
7)	GCE/IGCSE/GCSE:	Minimum 5 IGCSE/GCSE subjects – Grade D including English at ORDINARY(“O”) Level and 2 subject(s) in Advanced Subsidiary (AS) or 1 Advanced level subject (s) – Grade D.
8)	Ontario Secondary School Diploma	Minimum 6 “U/M” (University Preparatory Courses)
9)	WAECO/NECO (Africa) Senior School Certificate Examination	Minimum of 7 subjects with no more than 1 “Pass”
10)	Pakistan (Intermediate Certificate or Higher Secondary School Certificate)	55% overall in Grade 12
11)	Bangladesh (Higher Secondary School Certificate)	GPA of 3.0 / 5.0 in Grade 12
12)	Philippines (High School Diploma Grade 12 Academic track)	60% overall in Grade 12
13)	Nepal (School Leaving Certificate Examination)	2.3 out of 4
14)	Iran (Pre-University Certificate)	11
15)	CIS countries	Attestat average 3 out of 5

Important Notes for SIU, Dubai Applicants:

- We accept applications before final 10+2 results, but passing is required before program starts.
- No compartments allowed. Students who fail any subject in their final results are not eligible.
- Double-check your program! Each program has unique requirements.
- Meeting the bar is key. Admission depends on fulfilling all program-specific eligibility criteria.
- Completing the application doesn't guarantee acceptance.
- Submit all documents.

Documents to be uploaded for your SIU, Dubai application:

Academic Records:

- Grade 10 & Grade 12 Mark Sheets (Front and Back): Scan both sides of your mark sheets. If they're not in English, include certified English translations.
- Predicted Score or Pre-Board Marks (If applicable): Get your principal's endorsement on school letterhead.
- Passport and Identity: Photocopy of Valid Passport: Make sure it's clear and current.
- Personal Statements:
- Statement of Purpose (1000 words): Reflect on your strengths, weaknesses, academic achievements, and goals for SIU, Dubai (only for Graduate programs).
- CV (Curriculum Vitae): Highlight your experiences and accomplishments (only for Graduate programs).
- English Proficiency: English Proficiency Test Results to prove your language skills with an accepted test.
- Subject Specific Proficiency either through High School equivalent score or through Symbiosis Bridge Course
- Payment Proof: Application Fee Payment Receipt, showing you've paid the fee via SWIFT/NEFT/RTGS transfer.

Application Fee per program (non-refundable) : 250 AED +10% of Annual Tuition fees

Selection Procedure:

Selection Step-by-Step

- Merit matters! Your academic record, English skills, personal statement, recommendations, and CV all play a role in getting shortlisted.
- If shortlisted, prepare for the Admission Committee interview (applicable for Graduate program).
- You'll receive an email with one of three outcomes:
- Offer: Congratulations! Secure your spot by paying the fees mentioned in your Offer Letter.
- Waitlist: Stay hopeful! You might still get accepted if openings arise.
- Regret: Keep your chin up! Explore other options and apply again for the next admission cycle.

Admission Confirmation Letter:

On confirmation of the receipt of fees, the student will be considered as 'Provisionally Admitted' to SIU, Dubai and a letter (via email) to this effect will be sent to the student. This letter will include the formalities to be completed at the time of joining the program at the university.

The student provisionally admitted will have to report in person on the dates mentioned in the Admission Confirmation letter to complete the joining formalities. The provisional admission of the student will be confirmed only after completion of the eligibility formalities.

Student VISA:

It is mandatory for all foreign students to have a valid UAE residence visa to study in the UAE.

Documents required to be submitted for confirmation of eligibility and admission:

- Mark sheet of 10th Std./ equivalent
- Mark sheet of 12th Std./ equivalent
- MOE Equivalency Certificate (if applicable)
- Passing Certificate
- English Proficiency Test Result (High School equivalent score/IST Scores)
- Subject Specific Proficiency either through High School equivalent score or through Symbiosis Bridge Course
- Migration Certificate to be submitted in original (if applicable)
- Transfer Certificate to be submitted in original (if applicable)
- Change of Name Certificate by Government Gazette (if applicable)
- Passport Copy (if applicable)
- Valid Visa (if applicable)
- Valid Residential Permit (if applicable)
- Gap Certificate for students with a gap of one year or more in their education (if applicable)
- Anti-Ragging/Hazing Affidavit by Student
- Anti-Ragging/hazing Affidavit by Parent
- Indemnification Undertaking by Student
- Indemnification Undertaking by Parent

Important Note for SIU, Dubai Applicants:

- Bring your paperwork! On admission day, have copies of all uploaded documents (listed above) for confirmation and eligibility check.
- Originals matter! Don't forget to bring the original copies of all your documents for SIU, Dubai's team to verify.
- Be prepared! Having everything ready ensures a smooth start to your SIU, Dubai journey.
- For admission related queries: email to admissions@siu-dubai.ac.ae

Scholarships

To empower ambitious learners, and to ignite their academic journeys, we proudly unveil merit based attractive scholarships designed specifically for undergraduate and graduate students.

Merit based scholarships will be awarded on the basis of the following documents uploaded along with the application form:

- Nationality
- Sex
- Academic Credentials

SIU, Dubai Inaugural Scholarship for the year 2025-26

- **Scholarship Opportunities for All Undergraduates:** Dedicated to rewarding academic excellence, we offer merit- based scholarships for all undergraduate programs. Apply now and potentially receive substantial financial assistance towards your entire degree.

SIU, Dubai Women Empowerment Scholarship for the year 2025-26:

- **Undergraduate Programs:** All Emirati female applicants are eligible for a significant scholarship, covering a substantial portion of your program fees throughout your studies.

Tips:

- Apply Early – Deadlines vary, so check the website for your specific program.
- Seek Guidance – The Admissions Team is happy to answer your questions and support you throughout the admission process.

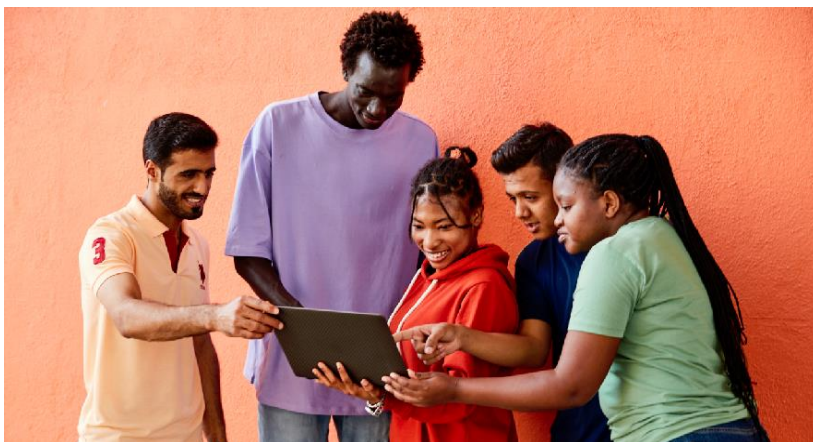
With dedication, the right program, and this guide as your compass, you're well on your way to joining the vibrant academic community at Symbiosis International University, Dubai. We wish you the best of luck on your admission journey!

Student Services

Library: The library has a great ambience with a reading hall and a reference section. It also has a digital library and internet browsing facility with e-books and online databases. Apart from this, SIU Dubai shall provide to its students, through various co-operative agreements with other libraries and learning resource centers based locally. This shall greatly benefit our students by expanding access to resources and enhancing learning opportunities. The library shall remain open from 9.00 am to 8.00 pm from Monday to Friday. Students are requested to refer to the Student Handbook and Library Manual for details of Library usage policies and procedures.

Emotional Well-being: SIU, Dubai is committed to supporting the overall, holistic health & well-being of its students & staff.

Extra-Curricular activities: There are ample opportunities for students to showcase their talents and pursue their interests through a diverse range of extracurricular and co-curricular activities and competitions.



Code of Conduct

The Code of Conduct helps maintain an appropriate sense of order that allows the pursuit of the desired graduate attributes in a safe and fair environment. SIU, Dubai prioritizes a respectful, inclusive, and academically enriching environment for all. By following these guidelines, you contribute to a community of excellence and unlock your full potential as a student.

Respect and Inclusion:

- Treat everyone with respect, regardless of their background or beliefs. Discrimination based on race, color, religion, gender, etc. is strictly prohibited.
- Uphold the law and avoid any unlawful conduct.

Commitment to SIU, Dubai:

- Embrace the university's mission, values, and ethos. Follow all rules and regulations, even as they evolve.
- Contribute to a safe and inclusive campus environment free from harassment or discrimination. SIU, Dubai has a zero- tolerance policy towards sexual harassment and offers resources for support and reporting.

Academic Expectations:

- Maintain a minimum 75% attendance to be eligible for semester exams. Manage personal and extracurricular activities within the allotted 25% absence limit.
- Aim for at least 90% attendance to participate in the SIU, Dubai placement process.
- Complete assignments and academic activities on time, regardless of personal challenges. Be self-motivated and strive for excellence in your studies and extracurriculars.

Professionalism and Conduct:

- Dress appropriately, including wearing uniforms during guest lectures and seminars.
- Smoking, alcohol, and drugs are strictly prohibited on campus. Violations will result in disciplinary action, including expulsion.

Continuous Improvement and Communication:

- Be aware that curriculum, fees, and procedures may evolve as SIU, Dubai grows and adapts. Updates will be communicated regularly.
- If you have any concerns, utilize the proper channels to address them with the relevant committees.

Student Dress Code:

SIU, Dubai embraces a community rich in diverse cultures and backgrounds. In keeping with this spirit, we encourage students to dress in a way that reflects both professionalism and respect for the cultural and religious ethos of the UAE.

Grievance Redressal:



SIU, Dubai is committed to providing a fair, safe, and productive learning environment for all students. SIU, Dubai has a provision to constitute Student Grievance Redressal Committee (SGRC) to resolve any grievances as per the university level guideline.

Appeals

Any student(s) aggrieved by the decisions taken summarily by the Director/ Head-Student Services [without forwarding the case to the Campus Disciplinary Committee (CDC)] may wish to file an appeal before the Campus Disciplinary Committee within a period of seven (7) working days. Any person aggrieved by the decision of CDC may wish to file an appeal before the Director, SIU, Dubai within a period of seven (7) working days.

Procedure for Appeal:

The student aggrieved by the decision of the Director / Head-Student Services may prefer an appeal in the prescribed format before the Campus Disciplinary Committee within a period of seven (7) working days. The students aggrieved by the decision of the Campus Disciplinary Committee may prefer an appeal in the prescribed format before the Director, SIU, Dubai within a period of seven (7) working days. The Director may set up a committee or may seek the assistance of external experts as the case may be to investigate all relevant documents, findings and recommendation(s) related to the case. After hearing all the concerned parties and considering all the available materials on record, the Director shall take just and fair decisions. This decision shall be final and binding on all parties

Appeals before the Campus Disciplinary Committee:

The following procedure shall be followed to inquire and decide with the appeals before the Campus Disciplinary Committee:

- Any aggrieved student can file an appeal with the Campus Disciplinary Committee within seven (7) working days.
- The Member Secretary of the Campus Disciplinary Committee shall send a notice of hearing to the appealing student(s) and/ or parents (wherever applicable) and the Director within five (5) working days from receipt of the appeal in the prescribed format.
- The appealing student(s) shall be given a just and fair opportunity of hearing. They may, if they so desire, file their written statements. Under exceptional circumstances, either party may produce additional document(s) or lead additional evidence(s).
- The Campus Disciplinary Committee, in appropriate cases may permit the appearance of a party through electronic/online means.
- Either party does not have the right to legal representation during the appeal.
- The University shall arrange for inspection of documents, material, statements etc., if so desired, on the respective campus. The Committee shall follow the principles of natural justice while inquiring and deciding with the appeal.
- After hearing all the concerned parties and considering all the available materials on record, the Campus Disciplinary Committee shall take just and fair decisions. The Member Secretary of the Campus Disciplinary Committee shall communicate the decision of the Campus Disciplinary Committee to the appealing students/ concerned parties, with a copy to the Director and Officer, Student Welfare, within three days after the hearing.
- The Member Secretary shall communicate the decision of the appeal(s) to the appealing student(s)/parent(s), and the Director SIU, Dubai with a copy to the Campus Disciplinary Committee members and the Officer-Student Welfare.
- Either party may prefer a second appeal against the decision of Campus Disciplinary Committee before the Director, SIU, Dubai within three (3) working days after receiving the decision.
- The Officer-Student Welfare shall make a monthly report of all cases and submit it to the Director, SIU, Dubai.

Academic Integrity

SIU, Dubai upholds the principles of academic integrity. Academic misconduct can include acts of cheating, plagiarism (the representation of words, expressions, productions, or creative works of another as one's own, including presenting the work of current courses that is the same as a previous submission for another course without obtaining the instructor's permission), **AI generated content**, fabrication of facts and assignments, buying or selling of examination papers or assignments, failing to comply with the code of conduct for examination, and will result in appropriate punishment as detailed in the Student Handbook.

- At SIU, Dubai, integrity, courtesy, and consideration are not just words, they are the pillars of our academic community. We believe in fostering a learning environment where everyone feels respected and can thrive through honest effort.
- However, we understand that mistakes can happen. If any concerns about academic misconduct are raised, a competent authority will investigate and take appropriate action based on the severity of the issue.
- To be clear, academic misconduct, including plagiarism and unfair means during assessments, has no place at SIU, Dubai. We encourage all students to uphold the highest standards of academic integrity, not just to avoid consequences, but because it strengthens your learning and promotes fair competition.
- While this list provides examples of disruptive conduct and academic misconduct, it is not exhaustive. We reserve the right to address any behavior that undermines the university's mission or disrupts the learning environment.
- The Code of Conduct serves as a detailed guide to ethical behavior and expected conduct at SIU, Dubai. We encourage you to familiarize yourself with it to ensure a smooth and successful academic journey.
- Remember, fostering an environment of integrity benefits everyone. By embracing honesty and respect, we all contribute to a vibrant and supportive learning community where everyone can reach their full potential.

Understanding of Credits:

SIU, Dubai follows the internationally recognized practice of considering 1-semester credit equal to approximately 1 hour of time in class per week over a semester of 15 weeks or longer.

For the experiential learning/ practicum component of courses or laboratory or studio-based courses, 1-semester credit requires two hours of experiential learning (laboratory time or studio time, etc.) which will be considered equivalent to 1 hour of class time.

SIU, Dubai regards 60 credits relevant to the focused as fulfilling the requirements of a major within a program and 24 course credits relevant to the focused as fulfilling the requirements of a minor within a program. Core courses are discipline-specific courses that students in a particular program have to complete irrespective of focused (major).





Bachelor of Arts in Media and Communication

Program Learning Outcomes

The General Education component of the program includes 22 credits and aims to help students gain knowledge of local / regional history and culture and foundational skills necessary for their success in the undergraduate programme.

General Education Program		
Learning Outcomes		Alignment with QF <i>Emirates</i> – Level 7 (Bachelors’ Degree)
PLO 1	Demonstrate an understanding of the history and culture of the UAE and its impact on the socio-economic environment of the country and the region.	Knowledge
PLO 2	Apply critical thinking, innovation, and entrepreneurship skills to design sustainable solutions for contemporary challenges	Skill
PLO 3	Illustrate adequate Numerical, Computation, Communication, and Social skills necessary for academic success	Skill

BA(MC) Program Learning Outcomes aligned with QF *Emirates*: Level 7 (Bachelors' Degree)

Program –BA(MC)		
Learning Outcomes Upon the successful completion of the program, students will be able to:		Alignment with QF <i>Emirates</i> – Level 7 (Bachelors’ Degree)
PLO 1	Demonstrate an understanding of concepts and theories of communication in digital marketing, advertising, public relations, and corporate communication.	Knowledge
PLO 2	Critically assess the historical evolution of media forms and evaluate the impact of professionals and institutions on the development of digital marketing, advertising, public relations, and corporate communication.	Knowledge
PLO 3	Demonstrate advanced communication and information technology skills by creating media content that meets professional standards and caters to specific audiences and purposes	Skill
PLO 4	Apply innovative and advanced domain-specific knowledge to analyze real - world communication problems and propose evidence-based solutions critically.	Competence – Autonomy and Responsibility
PLO 5	Lead the development and implementation of modern tools and technologies for media production, creative design, and both digital and non-digital communications research.	Competence – Role in Context
PLO 6	Operate independently and professionally as an entrepreneur or team member to enhance organizational productivity and efficiency through effective communication strategies.	Competence – Self development

Academic fee and charges

Bachelor of Arts in Media and Communication (BAMC) Weekday: Payment Plan – Academic Fees & Charges										
Sr. No.	Description	Year 1		Year 2		Year 3		Year 4		Total Fees in AED
		Semester 1	Semester 2	Semester 1	Semester 2	Semester 1	Semester 2	Semester 1	Semester 2	
1	Academic Fee	21,000	21,000	21,000	21,000	21,000	21,000	21,000	21,000	1,68,000
2	Graduation Fee	-	-	-	-	-	-	-	500	500
3	Security Deposit (refundable)	4,000	-	-	-	-	-	-	-	4,000
	Total	25,000	21,000	21,000	21,000	21,000	21,000	21,000	21,500	1,72,500

Medical and Visa** charges for overseas students seeking student visa shall be AED 5,000 in the first year, renewable every year for AED 3500/-

Note:

- Application Fee (non-refundable) will be charged @ AED 250 + 10% of Annual Tuition fees per program.
- Any other charges incurred on behalf of the student/ to provide services to the student will be charged at actuals.
- Backlog Fee will be charged additional @ AED 500 + 5% VAT per course as applicable.
- Graduation Fee will be charged additional @ AED 500 + 5% VAT per course as applicable.
- *Medical Insurance and Visa charges (non-refundable) (inclusive of VAT), will be additional @ AED 5000 for overseas students requiring institutional visa, AED 1,000 will be charged in addition to this for students who are within UAE.
- Administrative fees (non-refundable) @ AED 1000 + 5% VAT will have to be paid by the student at the time of application for the cancellation of the admission.
- Administrative fees (non-refundable) @ AED 1000 + 5% VAT will have to be paid by the student at the time of application for the transfer of the admission.
- A late fee will be applicable for all fee payments that are not paid as per the schedule.
- VAT @ 5% will be charged extra on fees except refundable Security Deposit.

Fees Collection :

- Each SIU, Dubai program listed in the catalogue carries a prescribed fees. Students admitted to a program must pay this prescribed fees on or before the date mentioned in the invoice.
- A fee payment schedule is provided upon admission to admitted student and in case of an installment plan the payment should be made by the 10th of each month.
- The University may allow payment of semester fees in up to two instalments per semester upon request.

Annual Installment Plans

- 1st Installment – Before start of Fall Semester
- 2nd Installment – 8th Week of Fall Semester
- 3rd Installment – Before start of Spring Semester
- 4th Installment – 8th Week of Spring Semester

The fees can be paid through any of the following mode of payment :

- Cash
- Credit or Debit Card
- Cheque
- Direct Bank Transfer
- Website Payment Gateway
- Online Payment Link,
- Payment against Cheque(s) can be done 5 days prior to the date of the presenting the Cheque(s).
- If paying by bank transfer, all bank charges are to be borne by the remitter. Receipts will be issued upon confirmation of the transfer.
- Fees can also be paid at the Fee Counter in the university from 9:00 AM to 3:30 PM on all working days, using cash, cheque, or credit / debit card.
- Students with outstanding dues will have their academic records withheld and will not be allowed to register for the next semester.

Students who pay tuition fees with post-dated cheques must follow the following procedures:

- All Cheque(s) should be made payable to “SYMBIOSIS INTERNATIONAL UNIVERSITY” and the date mentioned on the Cheque(s) should not be later than the 10th of the month.
- In the event of a Cheque being dishonored, the student will be charged with Cheque Return charges as mentioned in the Fees Structure.
- In case of withdrawal from a program by the student, the fee will be processed as per the Refund Policy.
- The rest of the submitted post-dated cheques will be returned.

Program Tuition Fees

Academic Fees	Annual Fees (AED)	Annual Fees In AED (5% VAT incl)
Bachelor of Arts in Media and Communication BA(MC)	42,000	44,100

Other Fees / Charges	Payment Frequency	Fee - AED
Common Fees		
Application Fee	One Time	1,500 (VAT incl.)
Security Deposit	One Time	4,000
Backlog Fee	As Applicable	500 + 5% VAT
Graduation Fees	One Time	500 + 5% VAT
Visa and Medical Insurance (Inside UAE)	Yearly	6,000 (VAT incl.)
Visa and Medical Insurance (Outside UAE)	Yearly	5,000 (VAT incl.)
Visa and Medical Insurance Renewal	Yearly	3,500 (VAT incl.)
Visa Cancellation Fee (Inside UAE)	One Time	800 (VAT incl.)
Visa Cancellation Fee (Outside UAE)	One Time	2100 (VAT incl.)
Hostel Fee	Monthly	As per chosen accommodation*

Transportation Fees	Monthly	As per chosen service*
Bonafide Letters (Driving License, Embassy, Consulate, Passport Office, Bank, RTA. Etc.)	As Applicable	150 + 5% VAT
Duplicate Transcript charges (per transcript)		100 + 5% VAT
Re-Totalling fee/Re-checking charges		100 + 5% VAT
Degree Certificate changes		150 + 5% VAT
Duplicate Student ID Card		50 + 5% VAT
Duplicate Student Admit Card		50 + 5% VAT
Fines and Penalties		
Late payment fee (Per day)	As Applicable	10 (VAT incl.)
Library Damages	As Applicable	As per incident report
Cheque Dishonor Charges	As Applicable	150 (VAT incl.)

* Hostel Facility - KSK Homes / The Myriad / Yugo Dubailand / Any other

* Transportation - STS Transport/Any Other.

Note - All above mentioned charges are subject to change depending upon factors not under the University's control and shall depend on any change in Government / Immigration charges; Insurance subscription charges; Accommodation provider revising rentals; Transport Provider revising rates etc.

Tuition & Other Fees:

The tuition fees are charged on an annual basis and remains consistent for students who remain continuously enrolled and complete their program. Any instances of program postponement will be handled in accordance with Refund Policy

- Annual fee changes may occur to both tuition fees and other fees; changes in tuition fees will be applied to only new admissions, other fees changes will be applicable to both new admissions and continuing students.
- These changes will take effect at the beginning of each new academic year, and detailed information will be published by the Finance Department beforehand.
- Any change to tuition and other fees shall be announced and broadcasted well in advance on all SIUD communication platforms including the Catalogue of the academic year, prior to the start of each academic year.

Fines & Penalties:

- A late fee payment of AED 10/-per day will be charged if fees are not paid by the due date.
- Any dishonored charges will be subject to a 150 AED fee.
- Exam appearance and access to all University facilities may be restricted in the case that the fee is not paid.
- Any certification including at the completion of a course/program shall be subject to full fees payment as prescribed.

Scholarship / Fee waiver

- The approval of the scholarship is subject to meeting the admission, scholarship criteria and submission of the supporting documents.
- Students who meet the admissions requirements and complete the registration formalities will be offered a fee payment plan in addition to the scholarship / fee waiver granted to them at the time of acceptance.

Bachelor of Arts in Media and Communication

Degree Structure	<p>Total credits* – 120 (Major** (including discipline-specific core courses) - 60; Minor**- 24; General Education - 22; Social Responsibility Project - 4; Internship - 4; Project - 6)</p> <p>* Satisfactory completion of the following non-credit courses is mandatory for the award of degree: Fitness for Life; Emotional Well-being; 'Vasudhaiva Kutumbakam' SIU Global Citizenship; and Core Environmental Studies</p> <p>** Every student has to choose a major and a minor (a minor should be an area other than the chosen major) and complete the required credits in the area.</p>
Majors offered	<ul style="list-style-type: none"> • Digital Marketing and Advertising • Public Relations and Corporate Communication
Minors offered	<ul style="list-style-type: none"> • Digital Marketing and Advertising • Public Relations and Corporate Communication
Duration	8 Semesters
Credits and Experiential Learning	<p>SIU Dubai offers courses carrying 2 / 3 / 4 / 6 Credits in the BA(MC) Program. Each Credit is equivalent to 15 Classroom Teaching Hours. Each course also contains upto 20% of hours conducted using Experiential Learning methods.</p>
Student Intake	One Intake - Fall
Eligibility	<p>A minimum of 50% marks or equivalent grade in Standard XII (10+2) or an equivalent examination from a recognized High School Board.</p> <p>English Proficiency:</p> <ol style="list-style-type: none"> 1. UAE MOE High School English Score or equivalent: 80% 2. Students who have studied non-MOE curriculum, not instructed in English, are required to submit international standardized test scores. 3. Students who have studied non-MOE curriculum, instructed in English, are not required to prove English proficiency or not required to obtain scores from international standardized tests. Those who do not fulfil the minimum high school English language requirement of 80% have to submit a minimum score of an international standardized test: IELTS (Academic) 5.0 / Paper-based TOEFL 500 / Internet-based (iBT) TOEFL 61 / Computer-based (CBT) TOEFL 173
Selection Procedure	<p>The Admission Committee will shortlist the applications based on the student's previous academic track record, English Proficiency Test, Statement of Purpose, Letters of Recommendation, Passport copy and CV (Curriculum Vitae). Shortlisted candidates will be invited for a personal interview. SIU, Dubai will then declare the merit list of the selected candidates.</p>
Fee Structure	<p>Fees per year : AED 42000*</p> <p>* VAT @ 5% will be charged extra • ACADEMIC FEES TO BE PAID IN AED/USD</p> <p>Caution Money Deposit (Refundable) : AED 4000 (To be paid in the 1st year)</p>

Courses*

*Note: The list of courses may be periodically revised to assure contemporary relevance

General Education

- Academic English
- Arabic I
- UAE : History and Culture
- Entrepreneurship, Innovation, and Sustainability
- Design Thinking
- Cross Cultural Management
- Islamic Studies
- Business and Managerial Communication

Major Core Courses

- Basic Psychology
- Media Theories with Culture and Communication
- Advertising and Contemporary Culture
- Media Economics
- Fundamentals of Marketing
- Practical: Creation of a Newspaper/Film/Marketing Communication-AD, PR
- Corporate Film Production
- Research Methodology

Public Relations and Corporate Communication

- Introduction to Public Relations Practice
- Consumer Behaviour
- Corporate Communication Strategy
- Event Management
- Corporate Communications in Specialised Sectors
- Political and Advocacy Communication
- Crisis Management in Public Relations
- Global Public Relations
- Corporate Governance and CSR
- Strategic PR and Campaign Planning
- Retail Marketing
- Business Statistics and Market Research

Digital Marketing and Advertising

- Introduction to Advertising
- Digital Marketing
- Data Analytics using MS-Excel
- Social Media Marketing
- Advertising Strategy
- Influencer and Content Marketing
- Advertising and Film Making
- Advertising Design and Creatives
- Digital Branding Strategy
- User Interface Design and No Code App Development
- Sustainable Marketing
- Global Business Environment

Semester Wise Course / Study Plan

Semester I				
Catalogue Code	Course Title	Course Category		Credits
DBP6001	Academic English	General Education	General Education 1	3
DBT6592	Arabic I*	General Education	General Education 2	3
DBP6002	UAE- History and Culture	General Education	General Education 3	2
DBT6307	Basic Psychology	Major Core	Major Course 1 (DMA)/ Major Course 1 (PRCC)	3
DBT6360	Media Theories with Culture and Communication	Major Core	Major Course 2 (DMA)/ Major Course 2 (PRCC)	3
		Total		14
Semester II				
Catalog Code	Course Title	Course Category		Credits
DBT2001	Entrepreneurship, Innovation, and Sustainability	General Education	General Education 4	3
DBT2276	Cross Cultural Management	General Education	General Education 5	3
DBP6004	Islamic Studies	General Education	General Education 6	2
DBT6739	Media Economics	Major Core	Major Course 3 (DMA)/ Major Course 3 (PRCC)	3
DBT2465	Fundamentals of Marketing	Major Core	Major Course 4 (DMA)/ Major Course 4 (PRCC)	3
		Total		14

Semester III				
Catalog Code	Course Title	Course Category		Credits
DBT8732	Design Thinking	General Education	General Education 7	3
DT6754	Business and Managerial Communication	General Education	General Education 8	3
DBT5135	Introduction to Advertising	Major/ Minor in Digital Marketing and Advertising	Major Course 5 (DMA)	3
DBT5976	Introduction to Public Relations Practice	Major/ Minor in PRCC	Major Course 5 (PRCC)	
DBTM2135	Retail Marketing	Major/ Minor in PRCC	Major Course 6 (PRCC)	3
DBTMC5174	Digital Branding Strategy	Major/ Minor in Digital Marketing and Advertising	Major Course 6 (DMA)	
DBT5135	Introduction to Advertising	Major/ Minor in Digital Marketing and Advertising	Minor Course 1 (DMA)	3
DBT5976	Introduction to Public Relations Practice	Major/ Minor in PRCC	Minor Course 1 (PRCC)	
DBTM2135	Retail Marketing	Major/ Minor in PRCC	Minor Course 2 (PRCC)	3
DBTMC5174	Digital Branding Strategy	Major/ Minor in Digital Marketing and Advertising	Minor Course 2 (DMA)	
		Total		18

***Note: In Semester III, students have to choose one major and one minor area of study (which is different from their major). They have to complete two courses in their chosen major and two courses in their chosen minor.**

Semester IV*				
Catalog Code	Course Title	Course Category		Credits
DBT6306	Consumer Behaviour	Major/ Minor in PRCC	Major Course 7 (PRCC)	3
DBT3680	Digital Marketing	Major/ Minor in Digital Marketing and Advertising	Major Course 7 (DMA)	
DBT2720	Business Statistics	Major in PRCC	Major Course 8 (PRCC)	3
DBT3742	Data Analytics using MS Excel	Major in Digital Marketing and Advertising	Major Course 8 (DMA)	
DBTMC5220	Corporate Communications in Specialized Sectors	Major in PRCC	Major Course 9 (PRCC)	3
DBT5611	Advertising Strategy	Major in Digital Marketing and Advertising	Major Course 9 (DMA)	
DBT6306	Consumer Behaviour	Major/ Minor in PRCC	Minor Course 3 (PRCC)	3
DBT3680	Digital Marketing	Major/ Minor in Digital Marketing and Advertising	Minor Course 3 (DMA)	
DBT8000	Service Learning	Social Responsibility Project		4
		Total		16

***Note: In Semester IV, students have to complete 3 courses in the major and one course in the minor areas of study they chose in Semester III.**

Semester V*				
Catalog Code	Course Title	Course Category		Credits
DBTMC5213	Corporate Communication Strategy	Major/ Minor in PRCC	Major Course 10 (PRCC)	3
DBTMC5216	Social Media Marketing	Major/ Minor in Digital Marketing and Advertising	Major Course 10 (DMA)	
DBTMC5211	Crisis Management in Public Relations	Major/ Minor in PRCC	Major Course 11 (PRCC)	3
DBTMC5226	Advertising Film Making	Major/ Minor in Digital Marketing and Advertising	Major Course 11 (DMA)	
DBTMC5219	Event Management	Major/ Minor in PRCC	Major Course 12 (PRCC)	3
DBTMC5227	Influencer and Content Marketing	Major/ Minor in Digital Marketing and Advertising	Major Course 12 (DMA)	
DBT5952	Corporate Communication Strategy	Major/ Minor in PRCC	Minor Course 4 (PRCC)	3
TMC5216	Social Media Marketing	Major/ Minor in Digital Marketing and Advertising	Minor Course 4 (DMA)	
TMC5211	Crisis Management in Public Relations	Major/ Minor in PRCC	Minor Course 5 (PRCC)	3
DBTMC5226	Advertising Film Making	Major/ Minor in Digital Marketing and Advertising	Minor Course 5 (DMA)	
TMC5219	Event Management	Major/ Minor in PRCC	Minor Course 6 (PRCC)	3
TMC5227	Influencer and Content Marketing	Major/ Minor in Digital Marketing and Advertising	Minor Course 6 (DMA)	
		Total		18

Note: * In Semester V, students have to complete 3 courses in the major and 3 courses in the minor areas of study they chose in Semester III.

Semester VI*				
Catalog Code	Course Title	Course Category		Credits
DBT5448	Practical: Creation of a Newspaper/Film/Marketing / Communication-AD, PR	Major Core	Major Course 13 (PRCC)/ Major Course 13 (DMA)	3
TMC5186	Corporate Film Production	Major Core	Major Course 14 (PRCC)/ Major Course 14 (DMA)	3
DBTM2219	Corporate Governance and CSR	Major/ Minor in PRCC	Major Course 15 (PRCC)	3
DBTD8005	User Interface Design and No Code App Development	Major/ Minor in Digital Marketing and Advertising	Major Course 15 (DMA)	
DBTMC5175	Global Public Relations	Major in PRCC	Major Course 16 (PRCC)	3
DBTM2223	Sustainable Marketing	Major in Digital Marketing and Advertising	Major Course 16 (DMA)	
DBTM2219	Corporate Governance and CSR	Major/ Minor in PRCC	Minor Course 7 (PRCC)	3
DBTD8005	User Interface Design and No Code App Development"	Major/ Minor in Digital Marketing and Advertising	Minor Course 7 (DMA)	
		Total		15

Note: * In Semester VI, students have to complete 4 courses in the major and one course in the minor areas of study they chose in Semester III.

Semester VII*

Catalog Code	Course Title	Course Category		Credits
DBT5525	Research Methodology	Major Core	Major Course 17 (DMA)/ Major Course 17 (PRCC)	3
DBTMC5218	Strategic PR and Campaign Planning	Major/ Minor in PRCC	Major Course 18 (PRCC)	3
DBTMC5176	Advertising Design and Creatives	Major/ Minor in Digital Marketing and Advertising	Major Course 18 (DMA)	
DBTMC5218	Strategic PR and Campaign Planning	Major/ Minor in PRCC	Minor Course 8 (PRCC)	3
DBTMC5176	Advertising Design and Creatives	Major/ Minor in Digital Marketing and Advertising	Minor Course 8 (DMA)	
DBT5904	Internship	Internship		4
		Total		13

Note: * In Semester VII, students have to complete two courses in the major and one course in the minor areas of study they chose in Semester III

Semester VIII*

Catalog Code	Course Title	Course Category		Credits
DBT5806	Project	Project		6
DBT6094	Advertising and Contemporary Culture	Major Core	Major Course 19 (DMA)/ Major Course 19 (PRCC)	3
TMC5177	Political and Advocacy Communication	Major in PRCC	Major Course 20 (PRCC)	3
DBT2781	Global Business Environment	Major in Digital Marketing and Advertising	Major Course 20 (DMA)	
		Total		12

Note: * In Semester VIII, students have to complete two courses in the major area of study they chose in Semester III



Bachelor of Business Administration

Program Learning Outcomes

The General Education component of the program includes 22 credits and aims to help students gain knowledge of local / regional history and culture and foundational skills necessary for their success in the undergraduate programme.

General Education Program		
Learning Outcomes		Alignment with QF <i>Emirates</i> – Level 7 (Bachelors’ Degree)
PLO 1	Demonstrate an understanding of the history and culture of the UAE and its impact on the socio-economic environment of the country and the region.	Knowledge
PLO 2	Apply critical thinking, innovation, and entrepreneurship skills to design sustainable solutions for contemporary challenges	Skill
PLO 3	Illustrate adequate Numerical, Computation, Communication, and Social skills necessary for academic success	Skill

BBA Program Learning Outcomes aligned with QFEmirates: Level 7 (Bachelors’ Degree)

Program – BBA		
Learning Outcomes After successful completion of the BBA / BBA (Accounting and Finance) program, the student will be able to:		Alignment with QF <i>Emirates</i> – Level 7 (Bachelors’ Degree)
PLO 1	Demonstrate a comprehensive understanding of concepts and theories relating to accounting, finance, management and associated disciplines.	Knowledge
PLO 2	Apply critical thinking, analytical abilities, and domain knowledge to analyze and solve problems in the global business context.	Skill
PLO 3	Function effectively as a member or leader of a team in managing cross-functional and multicultural teams.	Competence – Role in Context
PLO 4	Design innovative and sustainable business solutions using substantive knowledge and appropriate research methods.	Competence – Autonomy and Responsibility
PLO 5	Integrate ethical and social standards to make informed business decisions.	Competence – Self development

Academic fee and charges

Bachelor of Business Administration (BBA) Weekday: Payment Plan – Academic Fees & Charges										
Sr. No.	Description	Year 1		Year 2		Year 3		Year 4		Total Fees in AED
		Semester 1	Semester 2	Semester 1	Semester 2	Semester 1	Semester 2	Semester 1	Semester 2	
1	Academic Fee	21,000	21,000	21,000	21,000	21,000	21,000	21,000	21,000	1,68,000
2	Graduation Fee	-	-	-	-	-	-	-	500	500
3	Security Deposit (refundable)	4,000	-	-	-	-	-	-	-	4,000
	Total	25,000	21,000	21,000	21,000	21,000	21,000	21,000	21,500	1,72,500

Medical and Visa** charges for overseas students seeking student visa shall be AED 5,000 in the first year, renewable every year for AED 3500/-

Note:

- Application Fee (non-refundable) will be charged @ AED 250 + 10% of Annual Tuition fees per program.
- Any other charges incurred on behalf of the student/ to provide services to the student will be charged at actuals.
- Backlog Fee will be charged additional @ AED 500 + 5% VAT per course as applicable.
- Graduation Fee will be charged additional @ AED 500 + 5% VAT per course as applicable.
- *Medical Insurance and Visa charges (non-refundable) (inclusive of VAT), will be additional @ AED 5000 for overseas students requiring institutional visa, AED 1,000 will be charged in addition to this for students who are within UAE.
- Administrative fees (non-refundable) @ AED 1000 + 5% VAT will have to be paid by the student at the time of application for the cancellation of the admission.
- Administrative fees (non-refundable) @ AED 1000 + 5% VAT will have to be paid by the student at the time of application for the transfer of the admission.
- A late fee will be applicable for all fee payments that are not paid as per the schedule.
- VAT @ 5% will be charged extra on fees except refundable Security Deposit.

Fees Collection :

- Each SIU, Dubai program listed in the catalogue carries a prescribed fees. Students admitted to a program must pay this prescribed fees on or before the date mentioned in the invoice.
- A fee payment schedule is provided upon admission to admitted student and in case of an installment plan the payment should be made by the 10th of each month.
- The University may allow payment of semester fees in up to two instalments per semester upon request.

Annual Installment Plans

- 1st Installment – Before start of Fall Semester
- 2nd Installment – 8th Week of Fall Semester
- 3rd Installment – Before start of Spring Semester
- 4th Installment – 8th Week of Spring Semester

The fees can be paid through any of the following mode of payment :

- Cash
 - Credit or Debit Card
 - Cheque
 - Direct Bank Transfer
 - Website Payment Gateway
 - Online Payment Link,
-
- Payment against Cheque(s) can be done 5 days prior to the date of the presenting the Cheque(s).
 - If paying by bank transfer, all bank charges are to be borne by the remitter. Receipts will be issued upon confirmation of the transfer.
 - Fees can also be paid at the Fee Counter in the university from 9:00 AM to 3:30 PM on all working days, using cash, cheque, or credit / debit card.
 - Students with outstanding dues will have their academic records withheld and will not be allowed to register for the next semester.

Students who pay tuition fees with post-dated cheques must follow the following procedures:

- All Cheque(s) should be made payable to “SYMBIOSIS INTERNATIONAL UNIVERSITY” and the date mentioned on the Cheque(s) should not be later than the 10th of the month.
- In the event of a Cheque being dishonored, the student will be charged with Cheque Return charges as mentioned in the Fees Structure.
- In case of withdrawal from a program by the student, the fee will be processed as per the Refund Policy.
- The rest of the submitted post-dated cheques will be returned.

Program Tuition Fees

Academic Fees	Annual Fees (AED)	Annual Fees In AED (5% VAT incl)
Bachelor of Business Administration (BBA)	42,000	44,100

Other Fees / Charges	Payment Frequency	Fee - AED
Common Fees		
Application Fee	One Time	1,500 (VAT incl.)
Security Deposit	One Time	4,000
Backlog Fee	As Applicable	500 + 5% VAT
Graduation Fees	One Time	500 + 5% VAT
Visa and Medical Insurance (Inside UAE)	Yearly	6,000 (VAT incl.)
Visa and Medical Insurance (Outside UAE)	Yearly	5,000 (VAT incl.)
Visa and Medical Insurance Renewal	Yearly	3,500 (VAT incl.)
Visa Cancellation Fee (Inside UAE)	One Time	800 (VAT incl.)

Visa Cancellation Fee (Outside UAE)	One Time	2100 (VAT incl.)
Hostel Fee	Monthly	As per chosen accommodation*
Transportation Fees	Monthly	As per chosen service*
Bonafide Letters (Driving License, Embassy, Consulate, Passport Office, Bank, RTA. Etc.)	As Applicable	150 + 5% VAT
Duplicate Transcript charges (per transcript)		100 + 5% VAT
Re-Totalling fee/Re-checking charges		100 + 5% VAT
Degree Certificate changes		150 + 5% VAT
Duplicate Student ID Card		50 + 5% VAT
Duplicate Student Admit Card		50 + 5% VAT
Fines and Penalties		
Late payment fee (Per day)	As Applicable	10 (VAT incl.)
Library Damages	As Applicable	As per incident report
Cheque Dishonor Charges	As Applicable	150 (VAT incl.)

* Hostel Facility - KSK Homes / The Myriad / Yugo Dubailand / Any other

* Transportation - STS Transport/Any Other.

Note - All above mentioned charges are subject to change depending upon factors not under the University's control and shall depend on any change in Government / Immigration charges; Insurance subscription charges; Accommodation provider revising rentals; Transport Provider revising rates etc.

Tuition & Other Fees

The tuition fees are charged on an annual basis and remains consistent for students who remain continuously enrolled and complete their program. Any instances of program postponement will be handled in accordance with Refund Policy

- Annual fee changes may occur to both tuition fees and other fees; changes in tuition fees will be applied to only new admissions, other fees changes will be applicable to both new admissions and continuing students.
- These changes will take effect at the beginning of each new academic year, and detailed information will be published by the Finance Department beforehand.
- Any change to tuition and other fees shall be announced and broadcasted well in advance on all SIUD communication platforms including the Catalogue of the academic year, prior to the start of each academic year.

Fines & Penalties:

- A late fee payment of AED 10/-per day will be charged if fees are not paid by the due date.
- Any dishonored charges will be subject to a 150 AED fee.
- Exam appearance and access to all University facilities may be restricted in the case that the fee is not paid.
- Any certification including at the completion of a course/program shall be subject to full fees payment as prescribed.

Scholarship / Fee waiver

- The approval of the scholarship is subject to meeting the admission, scholarship criteria and submission of the supporting documents.
- Students who meet the admissions requirements and complete the registration formalities will be offered a fee payment plan in addition to the scholarship / fee waiver granted to them at the time of acceptance.

Bachelor of Business Administration

Degree Structure	<p>Total credits* -120 (Major** (including discipline-specific core courses) -60; Minor**- 24; General Education - 22; Social Responsibility Project - 4; Internship -4; Project - 6) * Satisfactory completion of the following non-credit courses is mandatory for the award of degree: Fitness for Life; Emotional Well-being; ‘Vasudhaiva Kutumbakam’ SIU Global Citizenship; and Core Environmental Studies.</p>
Majors offered	<p>Students will have two options:</p> <ul style="list-style-type: none"> • BBA (without any Major) • Accounting and Finance
Minors offered	<ol style="list-style-type: none"> 1. Students pursuing the BBA course (without any Major) can choose 24 Credits from a wide range of Electives. 2. Students pursuing BBA (Accounting and Finance) can choose any one of the following Minors: <ol style="list-style-type: none"> a. Business Studies b. Entrepreneurship and Innovation
Duration	<p>8 Semesters</p> <p>An accelerated program of 7 Semesters may be offered to advanced learners who do not have any pending backlogs and have a minimum CGPA of 7.5 on a scale of 10 at the end of Semester 3.</p>
Credits and Experiential Learning	<p>SIU Dubai offers courses carrying 2 / 3 / 4 / 6 Credits in the BBA Program. Each Credit is equivalent to 15 Classroom Teaching Hours. Each course also contains upto 20% of hours conducted using Experiential Learning methods.</p>
Student Intake	<p>One Intake - Fall</p>
Eligibility	<p>A minimum of 50% marks or equivalent grade in Standard XII (10+2) or an equivalent examination from a recognized High School Board.</p> <p>English Proficiency:</p> <ol style="list-style-type: none"> 1. UAE MOE High School English Score or equivalent: 80% 2. Students who have studied non-MOE curriculum, not instructed in English, are required to submit international standardized test scores. 3. Students who have studied non-MOE curriculum, instructed in English, are not required to prove English proficiency or not required to obtain scores from international standardized tests. Those who do not fulfil the minimum high school English language requirement of 80% have to submit a minimum score of an international standardized test: IELTS (Academic) 5.0 / Paper-based TOEFL 500 / Internet-based (iBT) TOEFL 61 / Computer-based (CBT) TOEFL 173
Selection Procedure	<p>The Admission Committee will shortlist the applications based on the student's previous academic track record, English Proficiency Test, Statement of Purpose, Letters of Recommendation, Passport copy and CV (Curriculum Vitae). Shortlisted candidates will be invited for a personal interview. SIU, Dubai will then declare the merit list of the selected candidates.</p>
Fee Structure	<p>Fees per year: AED 42000*</p> <p>* VAT @ 5% will be charged extra • ACADEMIC FEES TO BE PAID IN AED/USD Caution Money Deposit (Refundable) : AED 4000 (To be paid in the 1st year)</p>
Courses* *Note: The list of courses may be periodically revised to assure contemporary relevance	General Education <ul style="list-style-type: none"> • Academic English • Arabic I • UAE : History and Culture • Entrepreneurship, Innovation, and Sustainability • Basic Psychology • Islamic Studies

Core Courses

- Business Laws
- Business Mathematics
- Corporate Governance and Ethics
- Research Methodology
- Principles and Practices of Management
- Business Functions – A
- Business Functions – B
- Principles of Microeconomics
- Business Statistics
- Business Accounting

General BBA

- Organizational Behaviour
- Analytics Foundation
- Training and Development
- Performance Management
- Fundamentals of Services Marketing
- Operations Research
- Fundamentals of Quality Management
- Emotional Intelligence for Personal Growth
- Workforce Planning
- Global Business Environment

Accounting and Finance

- Corporate Accounting
- Financial Management
- Company Law
- Auditing
- Working Capital Management
- Financial Reporting and Standards
- Financial Analytics
- Financial Services
- Mergers and Acquisitions
- Advanced Topics in Accounts

Entrepreneurship and Innovation

- Creativity and Innovation
- Risk Management in Entrepreneurship
- Social Entrepreneurship
- Corporate Entrepreneurship
- Technological Entrepreneurship
- Business Modelling and Business Plan
- Funding for Entrepreneurs
- MSME and Family Managed Business
- Building Lean Start-up

Business Studies

- Data Visualization
- Introduction to Digital Marketing
- Consumer Behaviour and Insights
- Fundamentals of Brand Management
- Sales and Distribution Management
- Fundamentals of Quality Management
- Emotional Intelligence for Personal Growth
- Managerial Competencies and Career Development
- Global Business Environment

BBA Semester Wise Course / Study Plan

Semester I			
Catalog Code	Course Title	Course Category	Credits
DBTM2054	Business Accounting	General BBA Course 1	3
DBT2560	Principles and Practices of Management	General BBA Course 2	3
DBT6001	Academic English	General Education 1	3
DBT6592	Arabic I*	General Education 2	3
DBT6002	UAE: History and Culture	General Education 3	2
		Total	14
* Note: This course is exempted for students proficient in Arabic. They can choose an English course based on their level.			
Semester II			
Catalog Code	Course Title	Course Category	Credits
DBTM2138	Business Functions – A	General BBA Course 3	3
DBTM2144	Business Functions – B	General BBA Course 4	3
DBT2001	Entrepreneurship, Innovation, and Sustainability	General Education 4	3
DBT6307	Basic Psychology	General Education 5	3
DBT6004	Islamic Studies/	General Education 6	2
		Total	14
Semester III			
Catalog Code	Course Title	Course Category	Credits
DBT6156	Principles of Microeconomics	General BBA Course 5	3
DBT2202	Business Mathematics	General BBA Course 6	3
DBT2279	Organizational Behaviour	General BBA Course 7	3
DBT2459	Corporate Accounting*	Elective Course 1*	3
DBT2341	Creativity and Innovation*		
DBT3612	Data Visualization		
DBT2276	Cross Cultural Management	General Education 7	3
DBT8732	Design Thinking	General Education 8	3
		Total	18
* In Semester III, Students pursuing General BBA must choose one elective course from the list			
Semester IV			
Catalog Code	Course Title	Course Category	Credits
DBT1133	Business Laws	General BBA Course 8	3
DBT2720	Business Statistics	General BBA Course 9	3
DBT2471	Introduction to Digital Marketing*	Elective courses 2 and 3*	6
DBT2350	Risk Management in Entrepreneurship*		

DBT2881	Consumer Behaviour and Insights*		
DBT2701	Social Entrepreneurship*		
DBT8000	Service Learning	Social Responsibility Project	4
		Total	16
* In Semester IV, Students pursuing General BBA must choose two elective courses from the list			
Semester V			
Catalog Code	Course Title	Course Category	Credits
DBT2682	Analytics Foundation	General BBA Course 10	3
DBT2268	Training and Development	General BBA Course 11	3
DBT2274	Performance Management	General BBA Course 12	3
DBT2882	Fundamentals of Services Marketing	General BBA Course 13	3
DBT2101	Financial Management*	Elective courses 4 and 5*	6
DBT2467	Fundamentals of Brand Management*		
DBT2700	Corporate Entrepreneurship*		
DBT1694	Company Law*		
DBT2351	Technological Entrepreneurship*		
DBT2089	Auditing*		
DBT2107	Working Capital Management*		
DBT2135	Sales and Distribution Management*		
		Total	18
* In Semester V, students pursuing General BBA must choose two elective courses from the list			
Semester VI			
Catalog Code	Course Title	Course Category	Credits
DBT5525	Research Methodology	General BBA Course 14	3
DBT2207	Operations Research	General BBA Course 15	3
DBT2158	Fundamentals of Quality Management	General BBA Course 16	3
DBT2273	Emotional Intelligence for Personal Growth	General BBA Course 17	3
DBT2091	Financial Reporting and Standards*	Elective course 6*	3
DBT2855	Financial Services*		
DBP2010	MSME and Family Managed Business*		
DBT2349	Funding for Entrepreneurs*		
		Total	15
* In Semester VI, Students must choose one elective course from the list.			
Semester VII			
Catalog Code	Course Title	Course Category	Credits
DBT2783	Corporate Governance and Ethics	General BBA Course 18	3
DT2782	Workforce Planning	General BBA Major Course 19	3

DT2267	Managerial Competencies and Career Development*	Elective course 7*	3
DT2832	Business Modelling and Business Plan*		
DT2904	Corporate Internship	Internship	4
		Total	13
* In Semester VII, Students pursuing General BBA must choose one elective course from the list			
Semester VIII			
Catalog Code	Course Title	Course Category	Credits
DT2806	Project	Project	6
DT2781	Global Business Environment	General BBA Course 20	3
DT2094	Advanced Topics in Accounts	Elective Course 8*	3
DT2980	Building Lean Start-up		
		Total	12
* Elective Students pursuing General BBA must choose one elective course from the list			



Bachelor of Computer Applications

Program Learning Outcomes

The General Education component of the program includes 22 credits and aims to help students gain knowledge of local / regional history and culture and foundational skills necessary for their success in the undergraduate programme.

General Education Program		
Learning Outcomes		Alignment with QF <i>Emirates</i> – Level 7 (Bachelors’ Degree)
PLO 1	Demonstrate an understanding of the history and culture of the UAE and its impact on the socio-economic environment of the country and the region.	Knowledge
PLO 2	Apply critical thinking, innovation, and entrepreneurship skills to design sustainable solutions for contemporary challenges	Skill
PLO 3	Illustrate adequate Numerical, Computation, Communication, and Social skills necessary for academic success	Skill

BCA Program Learning Outcomes aligned with QF Emirates: Level 7 (Bachelors’ Degree)

Program –BCA		
Learning Outcomes Upon the successful completion of the BCA program, students will be able to:		Alignment with QF <i>Emirates</i> – Level 7 (Bachelors’ Degree)
PLO 1	Demonstrate understanding of principles and advanced concepts related to computer applications, including artificial intelligence, machine learning, cloud computing, data science, and data analytics, for applying this knowledge to solve complex real-world problems.	Knowledge
PLO 2	Critically analyze complex problems in computer applications by employing advanced critical thinking, problem-solving, and decision-making skills within an evolving global technological landscape.	Competence – Autonomy and Responsibility
PLO 3	Integrate and apply theoretical knowledge in practical contexts through hands-on experiences, demonstrating the ability to bridge theory and practice effectively.	Skill
PLO 4	Demonstrate the use of effective communication skills and the ability to work collaboratively in diverse, multidisciplinary teams to achieve common goals.	Competence – Role in Context
PLO 5	Evaluate ethical standards in professional practice and demonstrate awareness of social and ethical implications in the field of computer applications.	Competence – Role in Context
PLO 6	Evaluate contemporary research in computer applications that contribute to advancing knowledge in the field for effective implementation or usage.	Competence – Self development

Academic fee and charges

Bachelor of Computer Applications (BCA) Weekday: Payment Plan – Academic Fees & Charges										
Sr. No.	Description	Year 1		Year 2		Year 3		Year 4		Total Fees in AED
		Semester 1	Semester 2	Semester 1	Semester 2	Semester 1	Semester 2	Semester 1	Semester 2	
1	Academic Fee	21,000	21,000	21,000	21,000	21,000	21,000	21,000	21,000	1,68,000
2	Graduation Fee	-	-	-	-	-	-	-	500	500
3	Security Deposit (refundable)	4,000	-	-	-	-	-	-	-	4,000
	Total	25,000	21,000	21,000	21,000	21,000	21,000	21,000	21,500	1,72,500

Medical and Visa** charges for overseas students seeking student visa shall be AED 5,000 in the first year, renewable every year for AED 3500/-

Note:

- Application Fee (non-refundable) will be charged @ AED 250 + 10% of Annual Tuition fees per program.
- Any other charges incurred on behalf of the student/ to provide services to the student will be charged at actuals.
- Backlog Fee will be charged additional @ AED 500 + 5% VAT per course as applicable.
- Graduation Fee will be charged additional @ AED 500 + 5% VAT per course as applicable.
- *Medical Insurance and Visa charges (non-refundable) (inclusive of VAT), will be additional @ AED 5000 for overseas students requiring institutional visa, AED 1,000 will be charged in addition to this for students who are within UAE.
- Administrative fees (non-refundable) @ AED 1000 + 5% VAT will have to be paid by the student at the time of application for the cancellation of the admission.
- Administrative fees (non-refundable) @ AED 1000 + 5% VAT will have to be paid by the student at the time of application for the transfer of the admission.
- A late fee will be applicable for all fee payments that are not paid as per the schedule.
- VAT @ 5% will be charged extra on fees except refundable Security Deposit.

Fees Collection :

- Each SIU, Dubai program listed in the catalogue carries a prescribed fees. Students admitted to a program must pay this prescribed fees on or before the date mentioned in the invoice.
- A fee payment schedule is provided upon admission to admitted student and in case of an installment plan the payment should be made by the 10th of each month.
- The University may allow payment of semester fees in up to two instalments per semester upon request.

Annual Installment Plans

- 1st Installment – Before start of Fall Semester
- 2nd Installment – 8th Week of Fall Semester
- 3rd Installment – Before start of Spring Semester
- 4th Installment – 8th Week of Spring Semester

The fees can be paid through any of the following mode of payment :

- Cash
 - Credit or Debit Card
 - Cheque
 - Direct Bank Transfer
 - Website Payment Gateway
 - Online Payment Link,
-
- Payment against Cheque(s) can be done 5 days prior to the date of the presenting the Cheque(s).
 - If paying by bank transfer, all bank charges are to be borne by the remitter. Receipts will be issued upon confirmation of the transfer.
 - Fees can also be paid at the Fee Counter in the university from 9:00 AM to 3:30 PM on all working days, using cash, cheque, or credit / debit card.
 - Students with outstanding dues will have their academic records withheld and will not be allowed to register for the next semester.

Students who pay tuition fees with post-dated cheques must follow the following procedures:

- All Cheque(s) should be made payable to “SYMBIOSIS INTERNATIONAL UNIVERSITY” and the date mentioned on the Cheque(s) should not be later than the 10th of the month.
- In the event of a Cheque being dishonored, the student will be charged with Cheque Return charges as mentioned in the Fees Structure.
- In case of withdrawal from a program by the student, the fee will be processed as per the Refund Policy.
- The rest of the submitted post-dated cheques will be returned.

Program Tuition Fees

Academic Fees	Annual Fees (AED)	Annual Fees In AED (5% VAT incl)
Bachelor of Computer Applications (BCA)	42,000	44,100

Other Fees / Charges	Payment Frequency	Fee - AED
Common Fees		
Application Fee	One Time	1,500 (VAT incl.)
Security Deposit	One Time	4,000
Backlog Fee	As Applicable	500 + 5% VAT
Graduation Fees	One Time	500 + 5% VAT
Visa and Medical Insurance (Inside UAE)	Yearly	6,000 (VAT incl.)
Visa and Medical Insurance (Outside UAE)	Yearly	5,000 (VAT incl.)
Visa and Medical Insurance Renewal	Yearly	3,500 (VAT incl.)
Visa Cancellation Fee (Inside UAE)	One Time	800 (VAT incl.)

Visa Cancellation Fee (Outside UAE)	One Time	2100 (VAT incl.)
Hostel Fee	Monthly	As per chosen accommodation*
Transportation Fees	Monthly	As per chosen service*
Bonafide Letters (Driving License, Embassy, Consulate, Passport Office, Bank, RTA. Etc.)	As Applicable	150 + 5% VAT
Duplicate Transcript charges (per transcript)		100 + 5% VAT
Re-Totalling fee/Re-checking charges		100 + 5% VAT
Degree Certificate changes		150 + 5% VAT
Duplicate Student ID Card		50 + 5% VAT
Duplicate Student Admit Card		50 + 5% VAT
Fines and Penalties		
Late payment fee (Per day)	As Applicable	10 (VAT incl.)
Library Damages	As Applicable	As per incident report
Cheque Dishonor Charges	As Applicable	150 (VAT incl.)

* Hostel Facility - KSK Homes / The Myriad / Yugo Dubailand / Any other

* Transportation - STS Transport/Any Other.

Note - All above mentioned charges are subject to change depending upon factors not under the University's control and shall depend on any change in Government / Immigration charges; Insurance subscription charges; Accommodation provider revising rentals; Transport Provider revising rates etc.

Tuition & Other Fees

The tuition fees are charged on an annual basis and remains consistent for students who remain continuously enrolled and complete their program. Any instances of program postponement will be handled in accordance with Refund Policy

- Annual fee changes may occur to both tuition fees and other fees; changes in tuition fees will be applied to only new admissions, other fees changes will be applicable to both new admissions and continuing students.
- These changes will take effect at the beginning of each new academic year, and detailed information will be published by the Finance Department beforehand.
- Any change to tuition and other fees shall be announced and broadcasted well in advance on all SIUD communication platforms including the Catalogue of the academic year, prior to the start of each academic year.

Fines & Penalties:

- A late fee payment of AED 10/-per day will be charged if fees are not paid by the due date.
- Any dishonored charges will be subject to a 150 AED fee.
- Exam appearance and access to all University facilities may be restricted in the case that the fee is not paid.
- Any certification including at the completion of a course/program shall be subject to full fees payment as prescribed.

Scholarship / Fee waiver

- The approval of the scholarship is subject to meeting the admission, scholarship criteria and submission of the supporting documents.
- Students who meet the admissions requirements and complete the registration formalities will be offered a fee payment plan in addition to the scholarship / fee waiver granted to them at the time of acceptance.

Bachelor of Computer Applications

Degree Structure	<p>Total credits* – 120 (Major** (including discipline-specific core courses) - 60; Minor** - 24; General Education - 22; Social Responsibility Project - 2; Internship - 12; * Satisfactory completion of the following non-credit courses is mandatory for the award of degree: Fitness for Life; Emotional Well-being; ‘Vasudhaiva Kutumbakam’ SIU Global Citizenship; and Core Environmental Studies ** Every student has to choose a major and a minor (a minor should be an area other than the chosen major) and complete the required credits in the area.</p>
Majors offered	<ul style="list-style-type: none">• Artificial Intelligence and Machine Learning• Data Science and Data Analytics• Cloud Computing
Minors offered	<ul style="list-style-type: none">• Artificial Intelligence and Machine Learning• Data Science and Data Analytics• Cloud Computing
Duration	<p>8 Semesters</p> <p>An accelerated program of 7 Semesters may be offered to advanced learners who do not have any pending backlogs and have a minimum CGPA of 7.5 on a scale of 10 at the end of Semester 3.</p>
Credits and Experiential Learning	<p>SIU Dubai offers courses carrying 2 / 3 / 6 credits in the BCA program, which is focused on building application-based skills. Up to 70% of the credits in the program have lab content dedicated to hands-on learning. Additionally, the Internship is as per the CAA requirements, which has more than 640 hours of Practical Training.</p>
Student Intake	<p>One Intake - Fall</p>
Eligibility	<p>A minimum of 50% marks or equivalent grade in Standard XII (10+2) or an equivalent examination from a recognized High School Board.</p> <p>English Proficiency:</p> <ol style="list-style-type: none">1. UAE MOE High School English Score or equivalent: 80%2. Students who have studied non-MOE curriculum, not instructed in English, are required to submit international standardized test scores.3. Students who have studied non-MOE curriculum, instructed in English, are not required to prove English proficiency or not required to obtain scores from international standardized tests. Those who do not fulfil the minimum high school English language requirement of 80% have to submit a minimum score of an international standardized test: IELTS (Academic) 5.0 / Paper-based TOEFL 500 / Internet-based (iBT) TOEFL 61 / Computer-based (CBT) TOEFL 173
Selection Procedure	<p>The Admission Committee will shortlist the applications based on the student's previous academic track record, English Proficiency Test, Statement of Purpose, Letters of Recommendation, Passport copy, and CV (Curriculum Vitae). Shortlisted candidates will be invited for a personal interview. SIU, Dubai, will then declare the merit list of the selected candidates.</p>
Fee Structure	<p>Fees per year : AED 42000*</p> <p>* VAT @ 5% will be charged extra • ACADEMIC FEES TO BE PAID IN AED/USD</p> <p>Caution Money Deposit (Refundable) : AED 4000 (To be paid in the 1st year)</p>
Courses*	<p>General Education</p> <ul style="list-style-type: none">• Academic English• Arabic - I• UAE : History and Culture• Entrepreneurship, Innovation and Sustainability• Business and managerial communication• Islamic Studies• Business Statistics and Business Mathematics

*Note: The list of courses may be periodically revised to assure contemporary relevance

Major Core Courses

- Web Technologies
- Introduction to Python Programming
- Relational Database Management System
- Introduction to Cloud Computing
- Network Essentials
- Foundations of Data Warehousing and Data Mining
- Data Structures and Algorithms
- Operating Systems
- Structured Query Language
- Research Methodology

Artificial Intelligence and Machine Learning

- Web Performance Analysis
- Introduction to Artificial Intelligence
- Machine Learning
- Natural Language and Responsive AI
- Predictive Analytics
- Neural Network
- Multimodal Machine Learning
- Supervised Machine Learning and Advances
- Deep Learning
- AI Applications in Social Media

Cloud Computing

- Internet of Things
- Cloud Applications for Business Processes
- Cloud Architectures and Security
- Cloud Administration and Management
- Fog Computing and Edge Computing
- Virtualization and Security
- Grid Computing and Utility Computing
- Cloud Based Solution Architecture
- Cloud Data Centre Management
- Cloud and AI

Data Science and Data Analytics

- Text Mining
- Data Science I
- Essentials of Business Intelligence
- Data Preparation and Data Management
- Big Data: Storage and Analytics
- Advanced Big Data Analytics
- Open Source Tools for Data Science
- Data Visualisation
- Statistical Machine Learning
- Python for Data Science

Semester Wise Course/Study Plan

Semester I				
Catalogue Code	Course Title	Course Category		Credits
DBP6001	Academic English	General Education	General Education 1	3
DBT6592	Arabic I*	General Education	General Education 2	3
DBP6002	UAE: History and Culture	General Education	General Education 3	2
DBTE7024	Web Technologies	Major Core	Major Course 1 (AIML) / Major Course 1 (CC) / Major Course 1 (DSDA)	3
DBTE7556	Introduction to Python Programming	Major Core	Major Course 2 (AIML) / Major Course 2 (CC) / Major Course 2 (DSDA)	3
		Total		14
Semester II				
Catalog Code	Course Title	Course Category		Credits
DBT2001	Entrepreneurship, Innovation, and Sustainability	General Education	General Education 4	3
DBT2276	Cross Cultural Management	General Education	General Education 5	3
DBT6004	Islamic Studies	General Education	General Education 6	2
DBT3580	Relational Database Management System	Major Core	Major Course 3 (AIML)/ Major Course 3 (CC)/ Major Course 3 (DSDA)	3
DBTE7544	Data Structures and Algorithms	Major Core	Major Course 4 (AIML)/ Major Course 4 (CC)/ Major Course 4 (DSDA)	3
		Total		14
Semester III				
Catalog Code	Course Title	Course Category		Credits
DBT8732	Design Thinking	General Education	General Education 7	3
DBP2975	Business Statistics and Mathematics	General Education	General Education 8	3
DBT7510	Operating Systems	Major Core	Major Course 5 (AIML)/ Major Course 5 (CC)/ Major Course 5 (DSDA)	3
DBT3609	Structured Query Language	Major Core	Major Course 6 (AIML)/ Major Course 6 (CC)/ Major Course 6 (DSDA)	3
DBT3334	Network Essentials	Major Core	Major Course 7 (AIML) / Major Course 7 (CC) / Major Course 7 (DSDA)	3
DBTE7948	Introduction to Cloud Computing	Major Core	Major Course 8 (AIML) / Major Course 8 (CC) / Major Course 8 (DSDA)	3
		Total		18

Semester IV*				
Catalog Code	Course Title	Course Category		Credits
DBT3720	Web Performance Analysis	Major in AIML	Major Course 9 (AIML)	3
DBT3492	Internet of Things	Major in CC	Major Course 9 (CC)	
DBT6988	Text Mining	Major in DSDA	Major Course 9 (DSDA)	
DBT3237	Foundations of Data Warehousing and Data Mining	Major Core	Major Course 10 (AIML)/ Major Course 10 (CC)/ Major Course 10 (DSDA)	3
DBTE7453	Introduction to Artificial Intelligence	Major/ Minor in AIML	Major Course 11 (AIML)	3
DBT3674	Cloud Applications for Business Processes	Major/ Minor in CC	Major Course 11 (CC)	
DBT6967	Data Science I	Major/ Minor in DSDA	Major Course 11 (DSDA)	
DBTE7453	Introduction to Artificial Intelligence	Major/ Minor in AIML	Minor Course 1 (AIML)	3
DBT3674	Cloud Applications for Business Processes	Major/ Minor in CC	Minor Course 1 (CC)	
DBT6967	Data Science I	Major/ Minor in DSDA	Minor Course 1 (DSDA)	
DBT8000	Service Learning	Social Responsibility Project		2
		Total		14
Note: * During Semester IV, students have to choose one major and one minor area of study (which is different from their major). They have to complete three courses in their chosen major and one course in their chosen minor.				
Semester V*				
Catalog Code	Course Title	Course Category		Credits
DBT3764	Machine Learning	Major/ Minor in AIML	Major Course 12 (AIML)	3
DBT3600	Cloud Architectures and Security	Major/ Minor in CC	Major Course 12 (CC)	
DBT3604	Essentials of Business Intelligence	Major/ Minor in DSDA	Major Course 12 (DSDA)	
DBTEE7022	Natural Language and Responsive AI	Major/ Minor in AIML	Major Course 13 (AIML)	3
DBT3750	Cloud Administration and Management	Major/ Minor in CC	Major Course 13 (CC)	
DBT3443	Data Preparation and Data Management	Major/ Minor in DSDA	Major Course 13 (DSDA)	
DBTE7022	Predictive Analytics	Major/ Minor in AIML	Major Course 14 (AIML)	3
DBT3752	Fog Computing and Edge Computing	Major/ Minor in CC	Major Course 14 (CC)	

DBT3510	Big Data: Storage and Analytics	Major/ Minor in DSDA	Major Course 14 (DSDA)	
DBT3764	Machine Learning	Major/ Minor in AIML	Minor Course 2 (AIML)	3
DBT3600	Cloud Architectures and Security	Major/ Minor in CC	Minor Course 2 (CC)	
DBT3604	Essentials of Business Intelligence	Major/ Minor in DSDA	Minor Course 2 (DSDA)	
DBTEE7022	Natural Language and Responsive AI	Major/ Minor in AIML	Minor Course 3 (AIML)	3
DBT3750	Cloud Administration and Management	Major/ Minor in CC	Minor Course 3 (CC)	
DBT3443	Data Preparation and Data Management	Major/ Minor in DSDA	Minor Course 3 (DSDA)	
DBTE7022	Predictive Analytics	Major/ Minor in AIML	Minor Course 4 (AIML)	3
DBT3752	Fog Computing and Edge Computing	Major/ Minor in CC	Minor Course 4 (CC)	
DBT3510	Big Data: Storage and Analytics	Major/ Minor in DSDA	Minor Course 4 (DSDA)	
		Total		18

Note: * During Semester V, students have to complete 3 courses each in the major and minor areas of study they chose in Semester IV.

Semester VI

Catalog Code	Course Title	Course Category		Credits
DBT5525	Research Methodology	Major Core	Major Course 15 (AIML)/ Major Course 15 (CC)/ Major Course 15 (DSDA)	3
DBTE7097	Neural Network	Major in AIML	Major Course 16 in AIML	3
DBT3543	Virtualization and Security	Major in CC	Major Course 16 in CC	
DBT3684	Advanced Big Data Analytics	Major in DSDA	Major Course 16 in DSDA	
DBTEE7021	Multimodal Machine Learning	Major/ Minor in AIML	Major Course 17 (AIML)	3
DBT3753	Grid Computing and Utility computing	Major/ Minor in CC	Major Course 17 (CC)	
DBTE7281	Open Source Tools for Data Science	Major/ Minor in DSDA	Major Course 17 (DSDA)	
DBT3699	AI Applications in Social Media	Major/ Minor in AIML	Major Course 18 (AIML)	3
DBT3726	Cloud and AI	Major/ Minor in CC	Major Course 18(CC)	
DBT6850	Python for Data Science	Major/ Minor in DSDA	Major Course 18 (DSDA)	
DBTEE7021	Multimodal Machine Learning	Major/ Minor in AIML	Minor Course 5 (AIML)	3

DBT3753	Grid Computing and Utility computing	Major/ Minor in CC	Minor Course 5 (CC)	
DBTE7281	Open Source Tools for Data Science	Major/ Minor in DSDA	Minor Course 5 (DSDA)	
DBT3699	AI Applications in Social Media	Major/ Minor in AIML	Minor Course 6 (AIML)	3
DBT3726	Cloud and AI	Major/ Minor in CC	Minor Course 6 (CC)	
DBT6850	Python for Data Science	Major/ Minor in DSDA	Minor Course 6 (DSDA)	
		Total		18

Note: * During Semester VI, students have to complete 4-courses in the major and 2 courses in the minor they chose in Semester IV.

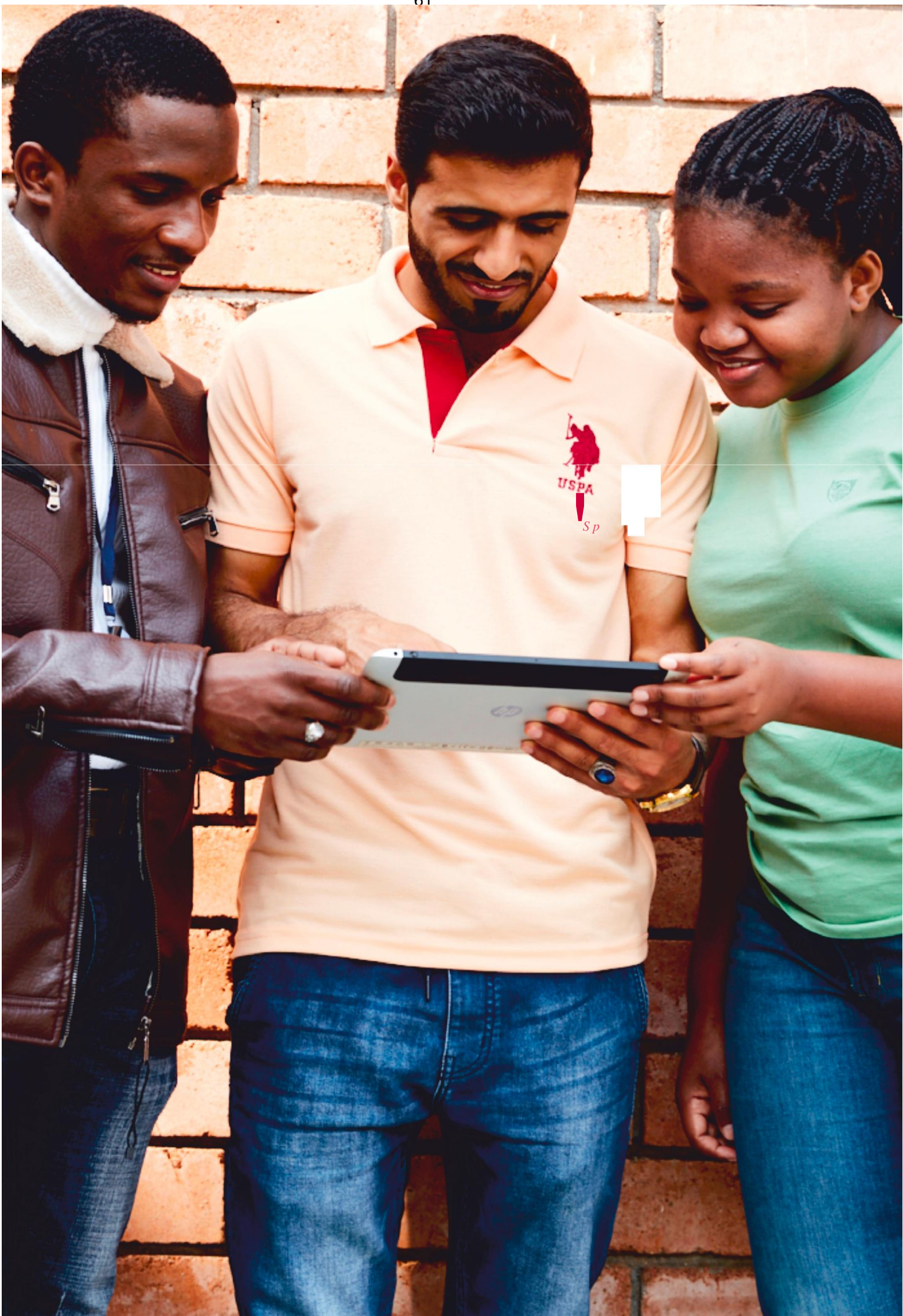
Semester VII*

Catalog Code	Course Title	Course Category		Credits
DBTE7912	Supervised Machine Learning and Advances	Major/ Minor in AIML	Major Course 19 (AIML)	3
DBT2894	Cloud based solution architecture	Major/ Minor in CC	Major Course 19 (CC)	
DBT3612	Data Visualisation	Major/ Minor in DSDA	Major Course 19 (DSDA)	
DBT3736	Deep Learning	Major/ Minor in AIML	Major Course 20 (AIML)	3
DBT3751	Cloud data Centre management	Major/ Minor in CC	Major Course 20 (CC)	
DBT6987	Statistical Machine Learning	Major/ Minor in DSDA	Major Course 20 (DSDA)	
DBTE7912	Supervised Machine Learning and Advances	Major/ Minor in AIML	Minor Course 7 (AIML)	3
DBT2894	Cloud-based solution architecture	Major/ Minor in CC	Minor Course 7 (CC)	
DBT3612	Data Visualisation	Major/ Minor in DSDA	Minor Course 7 (DSDA)	
DBT3736	Deep Learning	Major/ Minor in AIML	Minor Course 8 (AIML)	3
DBT3751	Cloud Data Centre management	Major/ Minor in CC	Minor Course 8 (CC)	
DBT6987	Statistical Machine Learning	Major/ Minor in DSDA	Minor Course 8 (DSDA)	
		Total		12

***Note: * During Semester VII, students have to complete 2 courses each in the major and minor areas of study they chose in Semester IV.**

Semester VIII*

Catalog Code	Course Title	Course Category		Credits
DBT3906	Internship	Internship		12



Undergraduate Programs Accredited by CAA in 2025-26

Undergraduate Programs Approved by Commission for Academic Accreditation (CAA), Ministry of Higher Education and Scientific Research (MOHESR), United Arab Emirates

Bachelor of Science in Psychology (Honors)-146 credits

- Bachelor of Science in Psychology - Organizational Psychology
- Bachelor of Science in Psychology - Counselling Psychology
- Bachelor of Science in Psychology (Honors) - Organizational Psychology
- Bachelor of Science in Psychology (Honors) - Counselling Psychology

Bachelor of Commerce Honors-146 credits

- Bachelor of Commerce (B.Com.) (with ACCA Prep.)
- Bachelor of Commerce Honors (with ACCA Prep.)

Bachelor of Business Administration-Dual Degree with Aston University UK-122 Credits

- Bachelor of Business Administration-Dual Degree with Aston University UK

Bachelor of Technology in Computer Engineering -153 Credits

Technical Electives/Concentration:

- Intelligent Systems
- Computational Intelligence
- Gaming Design and Development
- Emerging Technologies

Bachelor of Business Administration (Honors) – 149 Credits

- Bachelor of Business Administration (Honors) - Finance
- Bachelor of Business Administration (Honors) - Marketing
- Bachelor of Business Administration (Honors) - Logistics and Supply Chain Management
 - Bachelor of Business Administration (Honors) - Human Resource Management
 - Bachelor of Business Administration - Finance
 - Bachelor of Business Administration - Marketing
- Bachelor of Business Administration - Logistics and Supply Chain Management
 - Bachelor of Business Administration - Human Resource Management

Bachelor of Science in Psychology (Honors)

Program Learning Outcomes

The General Education component of the program includes 22 credits and aims to help students gain knowledge of local / regional history and culture and foundational skills necessary for their success in the undergraduate programme.

General Education Program		
Learning Outcomes		Alignment with QF <i>Emirates</i> – Level 6 (Bachelors’ Degree) as per QF Emirates 2024
PLO 1	Demonstrate an understanding of the history and culture of the UAE and its impact on the socio-economic environment of the country and the region.	Knowledge
PLO 2	Apply critical thinking, innovation, and entrepreneurship skills to design sustainable solutions for contemporary challenges	Skill
PLO 3	Illustrate adequate Numerical, Computation, Communication, and Social skills necessary for academic success (Skill).	Skill

B.Sc. in Psychology (Honours) Program Learning Outcomes aligned with QFEmirates: Level 7 (Bachelors’ Degree)

Program –B.Sc. (Psychology)- Honors		
Learning Outcomes After successful completion of the B.Sc. (Psychology)- Honours program, the student will be able to:		Alignment with QF <i>Emirates</i> – Level 7 (Bachelors’ Degree)
PLO 1	Demonstrate a comprehensive understanding of concepts and theories related to psychology.	Knowledge
PLO 2	Critically analyze human behavior's bio-psycho-social and cognitive aspects through psychological and research methods, procedures, and techniques.	Skill
PLO 3	Function effectively in both independent and team settings, engaging in professional collaboration and supervision within various individual and organizational contexts.	Competence – Role in Context
PLO 4	Illustrate the ability to work independently or collaboratively within diverse and complex professional environments.	Competence – Autonomy and Responsibility
PLO 5	Actively pursue the development of professional knowledge, nurture enterprising capabilities, and embrace sustainable, ethical practices that integrate the latest advancements and innovations in psychology.	Competence – Self development

Academic fee and charges

B.Sc. (Psychology)- Honors										
Weekday: Payment Plan – Academic Fees & Charges										
Sr. No.	Description	Year 1		Year 2		Year 3		Year 4		Total Fees in AED
		Semester 1	Semester 2	Semester 1	Semester 2	Semester 1	Semester 2	Semester 1	Semester 2	
1	Academic Fee	21,000	21,000	21,000	21,000	21,000	21,000	21,000	21,000	1,68,000
2	Graduation Fee	-	-	-	-	-	-	-	500	500
3	Security Deposit (refundable)	4,000	-	-	-	-	-	-	-	4,000
	Total	25,000	21,000	21,000	21,000	21,000	21,000	21,000	21,500	1,72,500

Medical and Visa** charges for overseas students seeking student visa shall be AED 5,000 in the first year, renewable every year for AED 3500/-

Note:

- Application Fee (non-refundable) will be charged @ AED 250 + 10% of Annual Tuition fees per program.
- Any other charges incurred on behalf of the student/ to provide services to the student will be charged at actuals.
- Backlog Fee will be charged additional @ AED 500 + 5% VAT per course as applicable.
- Graduation Fee will be charged additional @ AED 500 + 5% VAT per course as applicable.
- *Medical Insurance and Visa charges (non-refundable) (inclusive of VAT), will be additional @ AED 5000 for overseas students requiring institutional visa, AED 1,000 will be charged in addition to this for students who are within UAE.
- Administrative fees (non-refundable) @ AED 1000 + 5% VAT will have to be paid by the student at the time of application for the cancellation of the admission.
- Administrative fees (non-refundable) @ AED 1000 + 5% VAT will have to be paid by the student at the time of application for the transfer of the admission.
- A late fee will be applicable for all fee payments that are not paid as per the schedule.
- VAT @ 5% will be charged extra on fees except refundable Security Deposit.

Fees Collection:

- Each SIU, Dubai program listed in the catalogue carries a prescribed fee. Students admitted to a program must pay this prescribed fee on or before the date mentioned in the invoice.
- A fee payment schedule is provided upon admission to admitted student and in case of an installment plan the payment should be made by the 10th of each month.
- The University may allow payment of semester fees in up to two instalments per semester upon request.

Annual Installment Plans

- 1st Installment – Before start of Fall Semester
- 2nd Installment – 8th Week of Fall Semester
- 3rd Installment – Before start of Spring Semester
- 4th Installment – 8th Week of Spring Semester

The fees can be paid through any of the following mode of payment:

- Cash
 - Credit or Debit Card
 - Cheque
 - Direct Bank Transfer
 - Website Payment Gateway
 - Online Payment Link,
-
- Payment against Cheque(s) can be done 5 days prior to the date of the presenting the Cheque(s).
 - If paying by bank transfer, all bank charges are to be borne by the remitter. Receipts will be issued upon confirmation of the transfer.
 - Fees can also be paid at the Fee Counter in the university from 9:00 AM to 3:30 PM on all working days, using cash, cheque, or credit / debit card.
 - Students with outstanding dues will have their academic records withheld and will not be allowed to register for the next semester.

Students who pay tuition fees with post-dated cheques must follow the following procedures:

- All Cheque(s) should be made payable to “SYMBIOSIS INTERNATIONAL UNIVERSITY” and the date mentioned on the Cheque(s) should not be later than the 10th of the month.
- In the event of a Cheque being dishonored, the student will be charged with Cheque Return charges as mentioned in the Fees Structure.
- In case of withdrawal from a program by the student, the fee will be processed as per the Refund Policy.
- The rest of the submitted post-dated cheques will be returned.

Program Tuition Fees

Academic Fees	Annual Fees (AED)	Annual Fees in AED (5% VAT incl)
B.Sc. (Psychology)- Honours	42,000	44,100

Other Fees / Charges	Payment Frequency	Fee - AED
Common Fees		
Application Fee	One Time	1,500 (VAT incl.)
Security Deposit	One Time	4,000
Backlog Fee	As Applicable	500 + 5% VAT
Graduation Fees	One Time	500 + 5% VAT
Visa and Medical Insurance (Inside UAE)	Yearly	6,000 (VAT incl.)
Visa and Medical Insurance (Outside UAE)	Yearly	5,000 (VAT incl.)
Visa and Medical Insurance Renewal	Yearly	3,500 (VAT incl.)
Visa Cancellation Fee (Inside UAE)	One Time	800 (VAT incl.)

Visa Cancellation Fee (Outside UAE)	One Time	2100 (VAT incl.)
Hostel Fee	Monthly	As per chosen accommodation*
Transportation Fees	Monthly	As per chosen service*
Bonafide Letters (Driving License, Embassy, Consulate, Passport Office, Bank, RTA. Etc.)	As Applicable	150 + 5% VAT
Duplicate Transcript charges (per transcript)		100 + 5% VAT
Re-Totalling fee/Re-checking charges		100 + 5% VAT
Degree Certificate changes		150 + 5% VAT
Duplicate Student ID Card		50 + 5% VAT
Duplicate Student Admit Card		50 + 5% VAT
Fines and Penalties		
Late payment fee (Per day)	As Applicable	10 (VAT incl.)
Library Damages	As Applicable	As per incident report
Cheque Dishonor Charges	As Applicable	150 (VAT incl.)

* Hostel Facility - KSK Homes / The Myriad / Yugo Dubailand / Any other

* Transportation - STS Transport/Any Other.

Note - All above mentioned charges are subject to change depending upon factors not under the University's control and shall depend on any change in Government / Immigration charges; Insurance subscription charges; Accommodation provider revising rentals; Transport Provider revising rates etc.

Tuition & Other Fees

The tuition fees are charged on an annual basis and remains consistent for students who remain continuously enrolled and complete their program. Any instances of program postponement will be handled in accordance with Refund Policy

- Annual fee changes may occur to both tuition fees and other fees; changes in tuition fees will be applied to only new admissions, other fees changes will be applicable to both new admissions and continuing students.
- These changes will take effect at the beginning of each new academic year, and detailed information will be published by the Finance Department beforehand.
- Any change to tuition and other fees shall be announced and broadcasted well in advance on all SIUD communication platforms including the Catalogue of the academic year, prior to the start of each academic year.

Fines & Penalties:

- A late fee payment of AED 10/-per day will be charged if fees are not paid by the due date.
- Any dishonored charges will be subject to a 150 AED fee.
- Exam appearance and access to all University facilities may be restricted in the case that the fee is not paid.
- Any certification including at the completion of a course/program shall be subject to full fees payment as prescribed.

Scholarship / Fee waiver

- The approval of the scholarship is subject to meeting the admission, scholarship criteria and submission of the supporting documents.
- Students who meet the admissions requirements and complete the registration formalities will be offered a fee payment plan in addition to the scholarship / fee waiver granted to them at the time of acceptance.

Bachelor of Science in Psychology (Honors)

Degree Structure	<p>Total credits* -146</p> <p>General Education - 22; Core- 76, Internship-6, Sustainable Development Project-4, Project-8, Dissertation-12, Electives & Advanced Electives -18</p> <p>* Satisfactory completion of the following non-credit courses is mandatory for the award of degree: Fitness for Life; Emotional Well-being; 'Vasudhaiva Kutumbakam' SIU Global Citizenship; and Core Environmental Studies.</p>
Degrees Award/ Concentration	<p>Bachelor of Science in Psychology - Organizational Psychology</p> <p>Bachelor of Science in Psychology - Counselling Psychology</p> <p>Bachelor of Science in Psychology (Honors) - Organizational Psychology</p> <p>Bachelor of Science in Psychology (Honors) - Counselling Psychology</p>
Focus Areas Courses	Electives & Advanced Electives -18
Duration	8 Semesters
Credits and Experiential Learning	<p>SIU Dubai offers courses carrying 2 / 3 / 4 / 6 /8 Credits in the B.Sc. Psychology Program. Each Credit is equivalent to 15 Classroom Teaching Hours. Each course also contains up to 20% of hours conducted using Experiential Learning methods.</p>
Student Intake	One Intake - Fall
Eligibility	<p>A minimum of 50% marks or equivalent grade in Standard XII (10+2) or an equivalent examination from a recognized High School Board.</p> <p>English Proficiency:</p> <ol style="list-style-type: none"> 1. UAE MOE High School English Score or equivalent: 80% 2. Students who have studied non-MOE curriculum, not instructed in English, are required to submit international standardized test scores. 3. Students who have studied non-MOE curriculum, instructed in English, are not required to prove English proficiency or not required to obtain scores from international standardized tests. Those who do not fulfil the minimum high school English language requirement of 80% have to submit a minimum score of an international standardized test: IELTS (Academic) 5.0 / Paper-based TOEFL 500 / Internet-based (iBT) TOEFL 61 / Computer-based (CBT) TOEFL 173
Selection Procedure	<p>The Admission Committee will shortlist the applications based on the student's previous academic track record, English Proficiency Test, Statement of Purpose, Letters of Recommendation, Passport copy and CV (Curriculum Vitae). Shortlisted candidates will be invited for a personal interview. SIU, Dubai will then declare the merit list of the selected candidates.</p>
Fee Structure	<p>Fees per year: AED 42000*</p> <p>* VAT @ 5% will be charged extra • ACADEMIC FEES TO BE PAID IN AED/USD</p> <p>Caution Money Deposit (Refundable): AED 4000 (To be paid in the 1st year)</p>

Semester Wise Courses/ Study Plan

Semester I			
Course Code	Course Title	Course Category	Credits
DBPSY2001	Introduction to Psychology	Core	4
DBPSY2002	Scientific Foundations and Professional Practices of Psychology	Core	4
DBPSY2003	Introduction to Human Biology	Core	4
DBT6001	Academic English*	General Education	3
DBT6592	Arabic-I	General Education	3
DBT6004	Islamic Studies	General Education	2
	TOTAL		20
Semester II			
Course Code	Course Title	Course Category	Credits
DBPSY2004	Personality -Individual Differences	Core	4
DBT5525	Basics of Research Methodology	Core	4
DBPSY2005	Lifespan Development	Core	4
DBT6754	Business and Management Communication	General Education	3
DBT2001	Entrepreneurship, Innovation, and Sustainability	General Education	3
	TOTAL		18
Semester III			
Course Code	Course Title	Course Category	Credits
DBPSY2006	Social and Community Psychology	Core	4
DBPSY2007	Biopsychology	Core	4
DBPSY2008	Cognitive Psychology	Core	4
DBT8732	Design Thinking	General Education	3
DBT2276	Cross Cultural Management	General Education	3
DBT6002	UAE History and Culture	General Education	2
		TOTAL	20
Semester IV			
Course Code	Course Title	Course Category	Credits
DBPSY2009	Counselling Psychology	Core	4
DBPSY2010	Educational Psychology	Core	4
	Elective 1*	Elective	3
	Elective 2*	Elective	3
DBPSY7001	Sustainable Development Project Report	Social Responsibility Project	4
	TOTAL		18
*Choose any two courses from either Organizational or Counselling Track from the List of Focused / Concentration Electives			
Semester V			
Course Code	Course Title	Course Category	Credits
DBPSY2011	Psychological Assessments	Core	4
DBPSY5001	Qualitative Research Methods	Core	4
DBPSY2012	Abnormal Psychology	Core	4
	Elective 3*	Elective	3
	Elective 4*	Elective	3
	TOTAL		18

*Choose any two courses from either Organizational or Counselling Track from the List of Focused Areas Electives			
Summer Program			
Course Code	Course Title	Course Category	Credits
DBPSY7002	Project	Project	8
		TOTAL	8
Semester VI			
Course Code	Course Title	Course Category	Credits
DBPSY2013	Positive Psychology and Wellbeing Interventions	Core	4
DBPSY2014	Psychological Perspectives of Exceptional Learners	Core	4
DBPSY5002	Quantitative Research Methods	Core	4
DBPSY7003	Internship	Internship	6
		TOTAL	18
Semester VII (For Honors)			
Course Code	Course Title	Course Category	Credits
DBPSY2015	Systematic Review and Ethics	Core	4
DBPSY5003	Data Analysis Tools and Techniques for Researchers	Core	4
	Advanced Elective 1**	Elective	3
	Advanced Elective 2**	Elective	3
		TOTAL	14
*Choose any two courses from Advanced Electives for BSc. (Psychology) – Honors			
Semester VIII (For Honors)			
DBPSYD7004	Dissertation	Dissertation	12
		TOTAL	12

***Focused / Concentration Electives:**
Choose any Four Electives (Two each in Sem 4 and 5 from OP/CP track)

Course Code	Course Title	Credit	Focused / Concentration Track
DBPSY3100	Creativity and Innovation at the Workplace	3	OP
DBPSY3101	Organizational Psychology	3	OP
DBPSY3102	Consumer Behavior and Insights	3	OP
DBPSY3103	Performance Management	3	OP
DBPSY3104	Training and Development	3	OP
DBPSY3105	Psychology of Coaching	3	OP
DBPSY3200	Culture and Diversity in Counselling Practice	3	CP
DBPSY3201	Clinical Psychology	3	CP
DBPSY3202	Counseling and Interviewing Skills	3	CP
DBPSY3203	History Taking in Counselling	3	CP
DBPSY3204	Reflective Counselling Skills	3	CP
DBPSY3205	Health Psychology	3	CP

***The courses will be delivered according to SIU-Dubai's timetable and offered if there are at least 5 enrollments for the course in respective focused area.**

****Choose any Two Electives for BSc in Psychology (Honors) (In semester 7)**

Course Code	Course Title	Credit	Honors Track
DBPSY4001	Psychotherapeutic Approaches and Interventions	3	Advanced
DBPSY4002	Introduction to Cyber psychology	3	Advanced
DBPSY4003	Emotional Intelligence for Personal Growth	3	Advanced
DBPSY4004	Behavioral Neuroscience	3	Advanced
DBPSY4005	Experimental Psychology	3	Advanced

Bachelor of Commerce (Honors)

With ACCA Prep.

Program Learning Outcomes

The General Education component of the program includes 22 credits and aims to help students gain knowledge of local / regional history and culture and foundational skills necessary for their success in the undergraduate programme.

General Education Program		
Learning Outcomes		Alignment with QF <i>Emirates</i> – Level 6 (Bachelors’ Degree)
PLO 1	Demonstrate an understanding of the history and culture of the UAE and its impact on the socio-economic environment of the country and the region.	Knowledge
PLO 2	Apply critical thinking, innovation, and entrepreneurship skills to design sustainable solutions for contemporary challenges	Skill
PLO3	Demonstrate adequate quantitative aptitude, communication, and social skills necessary for academic success	Skill

B.Com. - Honors Program Learning Outcomes aligned with QFEmirates: Level 6 (Bachelors’ Degree)

Program –B.Com. - Honors		
Learning Outcomes After successful completion of the B.Com. - Honours program, the student will be able to:		Alignment with QF <i>Emirates</i> – Level 6 (Bachelors’ Degree)
PLO 1	Demonstrate, analyze, and apply core concepts of financial accounting, reporting, management, and valuation to solve complex real-world business problems.	Knowledge
PLO 2	Utilize modern financial tools and technologies, such as software and analytics, to optimize business analysis and enhance operational efficiency.	Skill
PLO 3	Evaluate and interpret business data using research and analytical skills to make informed, data-driven decisions.	Skill
PLO 4	Demonstrate a commitment to ethical business practices and implement sustainable governance practices in various business scenarios.	Competence – Autonomy and Responsibility
PLO 5	Demonstrate the ability to integrate global perspectives and cultural understanding into business practices and adapt to diverse business environments.	Competence – Role in Context

Academic fee and charges

B.Com. - Honors Program										
Weekday: Payment Plan – Academic Fees & Charges										
Sr. No.	Description	Year 1		Year 2		Year 3		Year 4		Total Fees in AED
		Semester 1	Semester 2	Semester 1	Semester 2	Semester 1	Semester 2	Semester 1	Semester 2	
1	Academic Fee	21,000	21,000	21,000	21,000	21,000	21,000	21,000	21,000	1,68,000
2	Graduation Fee	-	-	-	-	-	-	-	500	500
3	Security Deposit (refundable)	4,000	-	-	-	-	-	-	-	4,000
	Total	25,000	21,000	21,000	21,000	21,000	21,000	21,000	21,500	1,72,500

Medical and Visa** charges for overseas students seeking student visa shall be AED 5,000 in the first year, renewable every year for AED 3500/-

Note:

- Application Fee (non-refundable) will be charged @ AED 250 + 10% of Annual Tuition fees per program.
- Any other charges incurred on behalf of the student/ to provide services to the student will be charged at actuals.
- Backlog Fee will be charged additional @ AED 500 + 5% VAT per course as applicable.
- Graduation Fee will be charged additional @ AED 500 + 5% VAT per course as applicable.
- *Medical Insurance and Visa charges (non-refundable) (inclusive of VAT), will be additional @ AED 5000 for overseas students requiring institutional visa, AED 1,000 will be charged in addition to this for students who are within UAE.
- Administrative fees (non-refundable) @ AED 1000 + 5% VAT will have to be paid by the student at the time of application for the cancellation of the admission.
- Administrative fees (non-refundable) @ AED 1000 + 5% VAT will have to be paid by the student at the time of application for the transfer of the admission.
- A late fee will be applicable for all fee payments that are not paid as per the schedule.
- VAT @ 5% will be charged extra on fees except refundable Security Deposit.

Fees Collection :

- Each SIU, Dubai program listed in the catalogue carries a prescribed fees. Students admitted to a program must pay this prescribed fees on or before the date mentioned in the invoice.
- A fee payment schedule is provided upon admission to admitted student and in case of an installment plan the payment should be made by the 10th of each month.
- The University may allow payment of semester fees in up to two instalments per semester upon request.

Annual Installment Plans

- 1st Installment – Before start of Fall Semester
- 2nd Installment – 8th Week of Fall Semester
- 3rd Installment – Before start of Spring Semester
- 4th Installment – 8th Week of Spring Semester

The fees can be paid through any of the following mode of payment :

- Cash
 - Credit or Debit Card
 - Cheque
 - Direct Bank Transfer
 - Website Payment Gateway
 - Online Payment Link,
-
- Payment against Cheque(s) can be done 5 days prior to the date of the presenting the Cheque(s).
 - If paying by bank transfer, all bank charges are to be borne by the remitter. Receipts will be issued upon confirmation of the transfer.
 - Fees can also be paid at the Fee Counter in the university from 9:00 AM to 3:30 PM on all working days, using cash, cheque, or credit / debit card.
 - Students with outstanding dues will have their academic records withheld and will not be allowed to register for the next semester.

Students who pay tuition fees with post-dated cheques must follow the following procedures:

- All Cheque(s) should be made payable to “SYMBIOSIS INTERNATIONAL UNIVERSITY” and the date mentioned on the Cheque(s) should not be later than the 10th of the month.
- In the event of a Cheque being dishonored, the student will be charged with Cheque Return charges as mentioned in the Fees Structure.
- In case of withdrawal from a program by the student, the fee will be processed as per the Refund Policy.
- The rest of the submitted post-dated cheques will be returned.

Program Tuition Fees

Academic Fees	Annual Fees (AED)	Annual Fees In AED (5% VAT incl)
B.Com. - Honors	42,000	44,100
ACCA fees to be paid to SIU-Dubai separately		

Other Fees / Charges	Payment Frequency	Fee - AED
Common Fees		
Application Fee	One Time	1,500 (VAT incl.)
Security Deposit	One Time	4,000
Backlog Fee	As Applicable	500 + 5% VAT
Graduation Fees	One Time	500 + 5% VAT
Visa and Medical Insurance (Inside UAE)	Yearly	6,000 (VAT incl.)
Visa and Medical Insurance (Outside UAE)	Yearly	5,000 (VAT incl.)
Visa and Medical Insurance Renewal	Yearly	3,500 (VAT incl.)
Visa Cancellation Fee (Inside UAE)	One Time	800 (VAT incl.)

Visa Cancellation Fee (Outside UAE)	One Time	2100 (VAT incl.)
Hostel Fee	Monthly	As per chosen accommodation*
Transportation Fees	Monthly	As per chosen service*
Bonafide Letters (Driving License, Embassy, Consulate, Passport Office, Bank, RTA. Etc.)	As Applicable	150 + 5% VAT
Duplicate Transcript charges (per transcript)		100 + 5% VAT
Re-Totalling fee/Re-checking charges		100 + 5% VAT
Degree Certificate changes		150 + 5% VAT
Duplicate Student ID Card		50 + 5% VAT
Duplicate Student Admit Card		50 + 5% VAT
Fines and Penalties		
Late payment fee (Per day)	As Applicable	10 (VAT incl.)
Library Damages	As Applicable	As per incident report
Cheque Dishonor Charges	As Applicable	150 (VAT incl.)

* Hostel Facility - KSK Homes / The Myriad / Yugo Dubailand / Any other

* Transportation - STS Transport/Any Other.

Note - All above mentioned charges are subject to change depending upon factors not under the University's control and shall depend on any change in Government / Immigration charges; Insurance subscription charges; Accommodation provider revising rentals; Transport Provider revising rates etc.

Tuition & Other Fees

The tuition fees are charged on an annual basis and remains consistent for students who remain continuously enrolled and complete their program. Any instances of program postponement will be handled in accordance with Refund Policy

- Annual fee changes may occur to both tuition fees and other fees; changes in tuition fees will be applied to only new admissions, other fees changes will be applicable to both new admissions and continuing students.
- These changes will take effect at the beginning of each new academic year, and detailed information will be published by the Finance Department beforehand.
- Any change to tuition and other fees shall be announced and broadcasted well in advance on all SIUD communication platforms including the Catalogue of the academic year, prior to the start of each academic year.

Fines & Penalties:

- A late fee payment of AED 10/-per day will be charged if fees are not paid by the due date.
- Any dishonored charges will be subject to a 150 AED fee.
- Exam appearance and access to all University facilities may be restricted in the case that the fee is not paid.
- Any certification including at the completion of a course/program shall be subject to full fees payment as prescribed.

Scholarship / Fee waiver

- The approval of the scholarship is subject to meeting the admission, scholarship criteria and submission of the supporting documents.
- Students who meet the admissions requirements and complete the registration formalities will be offered a fee payment plan in addition to the scholarship / fee waiver granted to them at the time of acceptance.

Bachelor of Commerce (Honors)

Degree Structure	<p>Total credits* -146</p> <p>General Education - 22; Core- 76, Internship-6, Sustainable Development Project-4, Project-8, Dissertation-12, Electives & Advanced Electives -18</p> <p>* Satisfactory completion of the following non-credit courses is mandatory for the award of degree: Fitness for Life; Emotional Well-being; ‘Vasudhaiva Kutumbakam’ SIU Global Citizenship; and Core Environmental Studies.</p>
Degree Award	<p>Bachelor of Commerce (B.Com.)</p> <p>Bachelor of Commerce (Honors)</p>
Focus Areas Courses	<p>Electives & Advanced Electives -18</p>
Duration	<p>8 Semesters</p>
Credits and Experiential Learning	<p>SIU Dubai offers courses carrying 2 / 3 / 4 / 6 /8 Credits in the Bsc Psychology Program. Each Credit is equivalent to 15 Classroom Teaching Hours. Each course also contains up to 20% of hours conducted using Experiential Learning methods.</p>
Student Intake	<p>One Intakes - Fall</p>
Eligibility	<p>A minimum of 50% marks or equivalent grade in Standard XII (10+2) or an equivalent examination from a recognized High School Board.</p> <p>English Proficiency:</p> <ol style="list-style-type: none">1. UAE MOE High School English Score or equivalent: 80%2. Students who have studied non-MOE curriculum, not instructed in English, are required to submit international standardized test scores.3. Students who have studied non-MOE curriculum, instructed in English, are not required to prove English proficiency or not required to obtain scores from international standardized tests. <p>Those who do not fulfil the minimum high school English language requirement of 80% have to submit a minimum score of an international standardized test: IELTS (Academic) 5.0 / Paper-based TOEFL 500 / Internet-based (iBT) TOEFL 61 / Computer-based (CBT) TOEFL 173</p>
Selection Procedure	<p>The Admission Committee will shortlist the applications based on the student's previous academic track record, English Proficiency Test, Statement of Purpose, Letters of Recommendation, Passport copy and CV (Curriculum Vitae). Shortlisted candidates will be invited for a personal interview. SIU, Dubai will then declare the merit list of the selected candidates.</p>
Fee Structure	<p>Fees per year: AED 42000*</p> <p>* VAT @ 5% will be charged extra • ACADEMIC FEES TO BE PAID IN AED/USD</p> <p>Caution Money Deposit (Refundable): AED 4000 (To be paid in the 1st year)</p>

Semester Wise Course/ Study Plan

Semester I			
Catalog Code	Course Title	Course Category	Credits
DBCOM2001	Financial Accounting	Core	4
DBCOM2002	Business and Technology	Core	4
DBCOM2003	Business Economics	Core	4
DBT6001	Academic English	General Education	3
DBT6592	Arabic*	General Education	3
DBT6004	Islamic Studies	General Education	2
		TOTAL	20
Semester II			
Catalog Code	Course Title	Course Category	Credits
DBCOM2004	Taxation	Core	4
DBCOM2005	Cost and Management Accounting	Core	4
DBCOM2006	Legal Aspects of Business	Core	4
DBT6307	Basic Psychology	General Education	3
DBT2001	Entrepreneurship, Innovation, and Sustainability	General Education	3
		TOTAL	18
Semester III			
Catalog Code	Course Title	Course Category	Credits
DBCOM2007	Financial Reporting	Core	4
DBCOM2008	Audit and Assurance	Core	4
DBCOM5001	Research Methodology	Core	4
DT2276	Cross Cultural Management	General Education	3
DT8732	Design Thinking	General Education	3
DBT6002	UAE History and Culture	General Education	2
		TOTAL	20
Semester IV			
Catalog Code	Course Title	Course Category	Credits
	Elective 1*	Elective	3
DBCOM2010	Statistical Analysis and Visualization	Core	4
DBCOM2011	Governance and Ethics	Core	4
	Elective 2*	Elective	3
DBCOM7001	Sustainable Development Project Report	Social Responsibility Project	4
		TOTAL	18
Semester V			
Catalog Code	Course Title	Course Category	Credits
DBCOM2012	Financial Management	Core	4

	Elective 3*	Elective	3
DBCOM2013	Performance Management	Core	4
	Elective 4*	Elective	3
DBCOM2014	Financial Derivatives	Core	4
		TOTAL	18
Summer Program			
Catalog Code	Course Title	Course Category	Credits
DBCOM7002	Project	Project	8
		TOTAL	8
Semester VI			
Catalog Code	Course Title	Course Category	Credits
DBCOM2015	Business Valuation	Core	4
DBCOM2016	Smart Accounting Solutions & Reporting	Core	4
DBCOM2017	Security Analysis & Portfolio Management	Core	4
DBCOM7003	Internship	Internship	6
		TOTAL	18
Semester VII (For B.Com. Honors)			
Catalog Code	Course Title	Course Category	Credits
DBCOM2018	Systematic Review and Ethics	Core	4
DBCOM5002	Data Analysis Tools and Techniques for Researchers	Core	4
	Elective for Honors Advanced Elective 1 **	Elective	3
	Elective for Honors Advanced Elective 2 **	Elective	3
		TOTAL	14
Note: Choose any two from the list.			
Semester VIII (For B.Com. Honors)			
Catalog Code	Course Title	Course Category	Credits
DBCOM7004	Dissertation	Dissertation	12
		TOTAL	12

Elective Courses (Choose any 4) *

Catalog Code	Course Title	Course Category	Credits
DBCOM3101	Risk Management	Elective	3
DBCOM3102	Foreign Exchange Management	Elective	3
DBCOM3501	Digital Marketing	Elective	3
DBCOM3201	Islamic Banking and Finance	Elective	3
DBCOM3301	Google Analytics	Elective	3
DBCOM3502	Creativity and Innovation	Elective	3
DBCOM3302	Blockchain Technology	Elective	3
DBCOM3303	Python Programming	Elective	3
DBCOM3304	Advanced Excel: Tools for Business and Analytics	Elective	3

Advanced Elective Courses for Honors (Choose any 2) **

Catalog Code	Course Title	Course Category	Credits
DBCOM4001	Behavioural Finance	Advanced Elective	3
DBCOM4002	Research Trends in Banking and Insurance	Advanced Elective	3
DBCOM4003	Developmental Economics	Advanced Elective	3
DBCOM4004	Research in Financial Markets and Derivatives	Advanced Elective	3
DBCOM4005	International Business Research	Advanced Elective	3

***The courses will be delivered according to SIU-Dubai's timetable and offered if there are at least 5 enrollments for the course**

Bachelor of Business Administration (Dual Degree) with Aston University UK

Program Learning Outcomes

The General Education component of the program includes 22 credits and aims to help students gain knowledge of local / regional history and culture and foundational skills necessary for their success in the undergraduate programme.

General Education Program		
Learning Outcomes		Alignment with QF <i>Emirates</i> – Level 6 (Bachelors’ Degree) and Aston University Degree
PLO 1	Demonstrate an understanding of the history and culture of the UAE and its impact on the socio-economic environment of the country and the region.	Knowledge
PLO 2	Apply critical thinking, innovation, and entrepreneurship skills to design sustainable solutions for contemporary challenges	Skill
PLO3	Illustrate adequate Numerical, Computation, Communication, and Social skills necessary for academic success	Skill

Program –BBA Dual Degree		
Learning Outcomes After successful completion of the BBA Dual Degree program, the student will be able to:		Alignment with QF <i>Emirates</i> – Level 6 (Bachelors’ Degree)
PLO 1	Demonstrate a comprehensive understanding of concepts and theories relating to accounting, finance, management, and associated disciplines	Knowledge
PLO 2	Apply critical thinking, analytical abilities, and domain knowledge to analyze and solve problems in the global business context	Skill
PLO 3	Function effectively as a member or leader of a team in managing cross-functional and multicultural	Competence – Role in Context
PLO 4	Design innovative and sustainable business solutions using substantive knowledge and appropriate research methods	Competence – Autonomy and Responsibility
PLO 5	Develop the intercultural awareness needed to work and communicate effectively in an international business context	Competence – Role in Context

Academic fee and charges

Sr. No.	Description	Year 1		Year 2		Year 3		Year 4	
		Semester 1	Semester 2	Semester 1	Semester 2	Semester 1	Semester 2	Semester 1	Semester 2
1	Academic Fee	21,000	21,000	21,000	21,000	Fees to be Paid to Aston University UK for Year 3 and Year 4			
2	Dual Degree Registration Fee (one time)		25, 000						
3	Graduation Fee	-	-	-	-	-	-	-	500
4	Security Deposit (refundable)	4,000	-	-	-	-	-	-	-
	Total	25,000	46,000	21,000	21,000				500

Medical and Visa** charges for overseas students seeking student visa shall be AED 5,000 in the first year, renewable every year for AED 3500/-

Note:

- Application Fee (non-refundable) will be charged @ AED 250 + 10% of Annual Tuition fees per program.
- Any other charges incurred on behalf of the student/ to provide services to the student will be charged at actuals.
- Backlog Fee will be charged additional @ AED 500 + 5% VAT per course as applicable.
- Graduation Fee will be charged additional @ AED 500 + 5% VAT per course as applicable.
- *Medical Insurance and Visa charges (non-refundable) (inclusive of VAT), will be additional @ AED 5000 for overseas students requiring institutional visa, AED 1,000 will be charged in addition to this for students who are within UAE.
- Administrative fees (non-refundable) @ AED 1000 + 5% VAT will have to be paid by the student at the time of application for the cancellation of the admission.
- Administrative fees (non-refundable) @ AED 1000 + 5% VAT will have to be paid by the student at the time of application for the transfer of the admission.
- A late fee will be applicable for all fee payments that are not paid as per the schedule.
- VAT @ 5% will be charged extra on fees except refundable Security Deposit.

Fees Collection :

- Each SIU, Dubai program listed in the catalogue carries a prescribed fees. Students admitted to a program must pay this prescribed fees on or before the date mentioned in the invoice.
- A fee payment schedule is provided upon admission to admitted student and in case of an installment plan the payment should be made by the 10th of each month.
- The University may allow payment of semester fees in up to two instalments per semester upon request.

Annual Installment Plans

- 1st Installment – Before start of Fall Semester
- 2nd Installment – 8th Week of Fall Semester
- 3rd Installment – Before start of Spring Semester
- 4th Installment – 8th Week of Spring Semester

The fees can be paid through any of the following mode of payment :

- Cash
 - Credit or Debit Card
 - Cheque
 - Direct Bank Transfer
 - Website Payment Gateway
 - Online Payment Link,
-
- Payment against Cheque(s) can be done 5 days prior to the date of the presenting the Cheque(s).
 - If paying by bank transfer, all bank charges are to be borne by the remitter. Receipts will be issued upon confirmation of the transfer.
 - Fees can also be paid at the Fee Counter in the university from 9:00 AM to 3:30 PM on all working days, using cash, cheque, or credit / debit card.
 - Students with outstanding dues will have their academic records withheld and will not be allowed to register for the next semester.

Students who pay tuition fees with post-dated cheques must follow the following procedures:

- All Cheque(s) should be made payable to “SYMBIOSIS INTERNATIONAL UNIVERSITY” and the date mentioned on the Cheque(s) should not be later than the 10th of the month.
- In the event of a Cheque being dishonored, the student will be charged with Cheque Return charges as mentioned in the Fees Structure.
- In case of withdrawal from a program by the student, the fee will be processed as per the Refund Policy.
- The rest of the submitted post-dated cheques will be returned.

Program Tuition Fees

Academic Fees	Annual Fees (AED)	Annual Fees In AED (5% VAT incl)
BBA Dual Degree	42,000	44,100
Dual Degree Registration Fee (One Time)	25,000	26,250

Other Fees / Charges	Payment Frequency	Fee - AED
Common Fees		
Application Fee	One Time	1,500 (VAT incl.)
Security Deposit	One Time	4,000
Backlog Fee	As Applicable	500 + 5% VAT
Graduation Fees	One Time	500 + 5% VAT
Visa and Medical Insurance (Inside UAE)	Yearly	6,000 (VAT incl.)
Visa and Medical Insurance (Outside UAE)	Yearly	5,000 (VAT incl.)
Visa and Medical Insurance Renewal	Yearly	3,500 (VAT incl.)
Visa Cancellation Fee (Inside UAE)	One Time	800 (VAT incl.)

Visa Cancellation Fee (Outside UAE)	One Time	2100 (VAT incl.)
Hostel Fee	Monthly	As per chosen accommodation*
Transportation Fees	Monthly	As per chosen service*
Bonafide Letters (Driving License, Embassy, Consulate, Passport Office, Bank, RTA. Etc.)	As Applicable	150 + 5% VAT
Duplicate Transcript charges (per transcript)		100 + 5% VAT
Re-Totalling fee/Re-checking charges		100 + 5% VAT
Degree Certificate changes		150 + 5% VAT
Duplicate Student ID Card		50 + 5% VAT
Duplicate Student Admit Card		50 + 5% VAT
Fines and Penalties		
Late payment fee (Per day)	As Applicable	10 (VAT incl.)
Library Damages	As Applicable	As per incident report
Cheque Dishonor Charges	As Applicable	150 (VAT incl.)

* Hostel Facility - KSK Homes / The Myriad / Yugo Dubailand / Any other

* Transportation - STS Transport/Any Other.

Note - All above mentioned charges are subject to change depending upon factors not under the University's control and shall depend on any change in Government / Immigration charges; Insurance subscription charges; Accommodation provider revising rentals; Transport Provider revising rates etc.

Tuition & Other Fees

The tuition fees are charged on an annual basis and remains consistent for students who remain continuously enrolled and complete their program. Any instances of program postponement will be handled in accordance with Refund Policy

- Annual fee changes may occur to both tuition fees and other fees; changes in tuition fees will be applied to only new admissions, other fees changes will be applicable to both new admissions and continuing students.
- These changes will take effect at the beginning of each new academic year, and detailed information will be published by the Finance Department beforehand.
- Any change to tuition and other fees shall be announced and broadcasted well in advance on all SIUD communication platforms including the Catalogue of the academic year, prior to the start of each academic year.

Fines & Penalties:

- A late fee payment of AED 10/-per day will be charged if fees are not paid by the due date.
- Any dishonored charges will be subject to a 150 AED fee.
- Exam appearance and access to all University facilities may be restricted in the case that the fee is not paid.
- Any certification including at the completion of a course/program shall be subject to full fees payment as prescribed.

Scholarship / Fee waiver

- The approval of the scholarship is subject to meeting the admission, scholarship criteria and submission of the supporting documents.
- Students who meet the admissions requirements and complete the registration formalities will be offered a fee payment plan in addition to the scholarship / fee waiver granted to them at the time of acceptance.

BBA Dual Degree

Degree Structure	<p>Total credits* -122 (68 credits at SIUD and 54 credits at Aston University)</p> <p>General Education - 22; Core- 42, Internship-4,</p> <p>* Satisfactory completion of the following non-credit courses is mandatory for the award of degree: Fitness for Life; Emotional Well-being; '<i>Vasudhaiva Kutumbakam</i>' SIU Global Citizenship; and Core Environmental Studies.</p>
Award	<p>Students will be awarded</p> <ul style="list-style-type: none"> • Bachelor of Business Administration from Symbiosis International University-Dubai • Business and Management BSc (Hons) from Aston University, Birmingham
Focus Areas Courses	General
Duration	8 Semesters
Credits and Experiential Learning	<p>SIU Dubai offers courses carrying 2 / 3 / 6 Credits in the BBA Dual Degree Program. Each Credit is equivalent to 15 Classroom Teaching Hours. Each course also contains up to 20% of hours conducted using Experiential Learning methods.</p>
Student Intake	Two intakes - Fall and Spring
Eligibility	<p>A minimum of 50% marks or equivalent grade in Standard XII (10+2) or an equivalent examination from a recognized High School Board.</p> <p>English Proficiency:</p> <ol style="list-style-type: none"> 1. UAE MOE High School English Score or equivalent: 80% 2. Students who have studied non-MOE curriculum, not instructed in English, are required to submit international standardized test scores. 3. Students who have studied non-MOE curriculum, instructed in English, are not required to prove English proficiency or not required to obtain scores from international standardized tests. Those who do not fulfil the minimum high school English language requirement of 80% have to submit a minimum score of an international standardized test: IELTS (Academic) 5.0 / Paper-based TOEFL 500 / Internet-based (iBT) TOEFL 61 / Computer-based (CBT) TOEFL 173
Selection Procedure	<p>The Admission Committee will shortlist the applications based on the student's previous academic track record, English Proficiency Test, Statement of Purpose, Letters of Recommendation, Passport copy and CV (Curriculum Vitae). Shortlisted candidates will be invited for a personal interview. SIU, Dubai will then declare the merit list of the selected candidates.</p>
Fee Structure	<p>Fees per year: AED 42000*</p> <p>* VAT @ 5% will be charged extra • ACADEMIC FEES TO BE PAID IN AED/USD</p> <p>Caution Money Deposit (Refundable) : AED 4000 (To be paid in the 1st year)</p>

Semester Wise Course/ Study Plan

Semester I			
Catalog Code	Course Title	Course Category	Credits
DBTM2054	Business Accounting	General BBA Course	3
DBT2560	Principles and Practices of Management	General BBA Course	3
DBT6001	Academic English	General Education	3
DBT6592	Arabic I*	General Education	3
DBT6002	UAE: History and Culture	General Education	2
DBT6004	Islamic Studies	General Education	2
		TOTAL	16
Semester II			
Catalog Code	Course Title	Course Category	Credits
DBTM2138	Business Functions – A	General BBA Course	3
DBTM2144	Business Functions – B	General BBA Course	3
DBT2001	Entrepreneurship, Innovation, and Sustainability	General Education	3
DBT6307	Basic Psychology	General Education	3
DBT8732	Design Thinking	General Education	3
DECN101	Macro Economics	General BBA Course	3
			18
Semester III			
Catalog Code	Course Title	Course Category	Credits
DBT6156	Principles of Microeconomics	General BBA Course	3
DBT2202	Business Mathematics	General BBA Course	3
DBT2279	Organizational Behaviour	General BBA Course	3
DBT2459	Corporate Accounting	General BBA Course	3
DBT2207	Operations Research	General BBA Course	3
DBT2276	Cross Cultural Management	General Education	3
		Total	18
Semester IV			
Catalog Code	Course Title	Course Category	Credits
DBT1133	Business Laws	General BBA Course	3
DBT2720	Business Statistics	General BBA Course	3
DBT2471	Introduction to Digital Marketing	General BBA Course	3
DBT3612	Data Visualization	General BBA Course	3
DT2904	Corporate Internship	Internship	4
		Total	16

Semester V	Courses delivered as per the syllabus and structure of the BSc. Business and Management at Aston University, Birmingham, UK. Please refer to the annexure for course and credit mapping. (Annexure A)
Semester VI	
Semester VII	
Semester VIII	

Annexure A: Courses Offered at Aston University, United Kingdom

Year 3					
Catalog Code	Course Title	Credits	Course Code	Course Title	Credits
BM2245	Virtual Business Manager	15	DBT2351	Technological Entrepreneurship	3
BS2239	Business, Government and Society	15	DBP2010	MSME and Family Managed Business	3
BM2288	Fundamentals of Strategy	15	DBT2158, DBT2467	Fundamentals of Quality Management, Fundamentals of Brand Management	6
BS2237	Corporate Financial Management	30	DBT2101	Financial Management	3
BN2230	Business Analytics in Practice	15	DBT2682	Analytics Foundation	3
BN2218	Managing Service Operations	15	DBT2882	Fundamentals of Services Marketing	3
BM2293	Market Research	15	DBT5525	Research Methodology	3
YEAR 3 TOTAL CREDITS		120		SIUD EQUIVALENT CREDITS OF 3 rd YEAR	24

Courses Offered at Aston University, United Kingdom

Year 4					
BN3376	Implementing Business Decisions	15	DT2832	Business Modelling and Business Plan	3
BH3317	Strategic HRM	15	DT2782	Workforce Planning	3
BH3318	Theories and Practice of Leadership	15	DBT2268	Training and Development	3
BN3378	Sustainable Operations Management	15	DT2980	Building Lean Start-up	3
BH3313	Global Working	15	DT2781	Global Business Environment	3
BL3320	Business Ethics	15	DBT2783	Corporate Governance and Ethics	3
BM3333	Consumer Research and the Customer Experience	15	DT2806	Project	6
BH3311	Employee Relations	15	DBT2273, DBT2274	Emotional Intelligence for Personal Growth, Performance Management	6
YEAR 4 TOTAL CREDITS		120	SIUD EQUIVALENT CREDITS 4 th YEAR		30
TOTAL CREDITS		240			54

Total Credits to complete at SIU Dubai = Year 1 +Year 2 (34 +34) = 68 credits
Total Credits to complete at Aston University UK = Year 3 +Year 4 (24 + 30) = 54 credits

Bachelor of Technology in Computer Engineering

Program Learning Outcomes

The Professional Studies and General Education component of the program includes 19 credits and aims to help students gain knowledge of local/regional history, critical thinking, innovation, and UAE culture and foundational skills necessary for their success in the undergraduate programme.

General Education Program		
Learning Outcomes		Alignment with QF <i>Emirates</i> – Level 6 (Bachelors’ Degree)
PLO 1	Demonstrate an understanding of the history and culture of the UAE and its impact on the socio-economic environment of the country and the region.	Knowledge
PLO 2	Apply critical thinking, innovation, and entrepreneurship skills to design sustainable solutions for contemporary challenges.	Skill
PLO 3	Continuously acquire and effectively apply new knowledge as per emerging trends.	Skill

Bachelor of Technology in Computer Engineering Program Learning Outcomes aligned with 2024 QFEmirates: Level 6 (Bachelors’ Degree)

Program –Bachelor of Technology (Computer Science and Engineering)		
Learning Outcomes After successful completion of the Bachelor of Technology in Computer Engineering program, the student will be able to:		Alignment with QF <i>Emirates</i> – Level 6 (Bachelors’ Degree)
PLO 1	Demonstrate the knowledge of mathematics, science, and engineering fundamentals to solve complex engineering problems	Knowledge
PLO2	Demonstrate an advance understanding of conceptual knowledge related to solve societal, environmental contexts and the need for sustainable development	Knowledge
PLO 3	Critically analyze complex problems in the engineering and technology domain by employing advanced critical thinking, problem-solving, and decision-making skills within an evolving global technological landscape	Skill
PLO 4	Integrate and apply theoretical knowledge in practical contexts through hands-on experiences (Lab), demonstrating the ability to bridge theory and practice effectively	Skill
PLO 5	Select, apply, and develop appropriate techniques, resources, and modern engineering and IT tools, including prediction and modelling, to address complex engineering problems while recognizing their limitations	Skill
PLO 6	Demonstrate knowledge and understanding of the engineering and management principles and apply these to one's work as a team member leader to manage projects in multidisciplinary environments	Responsibility
PLO 7	Communicate effectively with various audiences within the engineering field and with the wider business community	Skill
PLO 8	Comprehend, draft reports, develop design documentation, deliver presentations, and convey clear instructions.	Responsibility

Academic fee and charges

Bachelor of Technology in Computer Engineering Weekday: Payment Plan – Academic Fees & Charges										
Sr. No.	Description	Year 1		Year 2		Year 3		Year 4		Total Fees in AED
		Semester 1	Semester 2	Semester 1	Semester 2	Semester 1	Semester 2	Semester 1	Semester 2	
1	Academic Fee	26775	26775	26775	26775	26775	26775	26775	26775	214200
2	Graduation Fee	-	-	-	-	-	-	-	500	500
3	Security Deposit (refundable)	4,000	-	-	-	-	-	-	-	4,000
4	Lab Deposit (refundable)	2000	-	-	-	-	-	-	-	2000
	Total	32775	26775	26775	26775	26775	26775	26775	27275	220700

Medical and Visa** charges for overseas students seeking student visa shall be AED 5,000 in the first year, renewable every year for AED 3500/-

Note:

- Application Fee (non-refundable) will be charged @ AED 250 + 10% of Annual Tuition fees per program.
- Any other charges incurred on behalf of the student/ to provide services to the student will be charged at actuals.
- Backlog Fee will be charged additional @ AED 500 + 5% VAT per course as applicable.
- Graduation Fee will be charged additional @ AED 500 + 5% VAT per course as applicable.
- *Medical Insurance and Visa charges (non-refundable) (inclusive of VAT), will be additional @ AED 5000 for overseas students requiring institutional visa, AED 1,000 will be charged in addition to this for students who are within UAE.
- Administrative fees (non-refundable) @ AED 1000 + 5% VAT will have to be paid by the student at the time of application for the cancellation of the admission.
- Administrative fees (non-refundable) @ AED 1000 + 5% VAT will have to be paid by the student at the time of application for the transfer of the admission.
- A late fee will be applicable for all fee payments that are not paid as per the schedule.
- VAT @ 5% will be charged extra on fees except refundable Security Deposit.
- **Applicable fees of 1000 AED + 5% VAT for students undertaking SIUD Bridge Courses on English, Mathematics, Physics, Chemistry, and Biology**

Fees Collection:

- Each SIU, Dubai program listed in the catalogue carries a prescribed fees. Students admitted to a program must pay this prescribed fee on or before the date mentioned in the invoice.
- A fee payment schedule is provided upon admission to admitted student and in case of an installment plan the payment should be made by the 10th of each month.
- The University may allow payment of semester fees in up to two instalments per semester upon request.

Annual Installment Plans

- 1st Installment – Before start of Fall Semester
- 2nd Installment – 8th Week of Fall Semester
- 3rd Installment – Before start of Spring Semester
- 4th Installment – 8th Week of Spring Semester

The fees can be paid through any of the following mode of payment :

- Cash
 - Credit or Debit Card
 - Cheque
 - Direct Bank Transfer
 - Website Payment Gateway
 - Online Payment Link,
-
- Payment against Cheque(s) can be done 5 days prior to the date of the presenting the Cheque(s).
 - If paying by bank transfer, all bank charges are to be borne by the remitter. Receipts will be issued upon confirmation of the transfer.
 - Fees can also be paid at the Fee Counter in the university from 9:00 AM to 3:30 PM on all working days, using cash, cheque, or credit / debit card.
 - Students with outstanding dues will have their academic records withheld and will not be allowed to register for the next semester.

Students who pay tuition fees with post-dated cheques must follow the following procedures:

- All Cheque(s) should be made payable to “SYMBIOSIS INTERNATIONAL UNIVERSITY” and the date mentioned on the Cheque(s) should not be later than the 10th of the month.
- In the event of a Cheque being dishonored, the student will be charged with Cheque Return charges as mentioned in the Fees Structure.
- In case of withdrawal from a program by the student, the fee will be processed as per the Refund Policy.
- The rest of the submitted post-dated cheques will be returned.

Program Tuition Fees

Academic Fees	Annual Fees (AED)	Annual Fees In AED (5% VAT incl)
Bachelor of Technology in Computer Engineering	53550	56228

Other Fees / Charges	Payment Frequency	Fee - AED
Common Fees		
Application Fee	One Time	1,500 (VAT incl.)
Security Deposit	One Time	4,000
Lab Deposit	One Time	2000
Backlog Fee	As Applicable	500 + 5% VAT
Graduation Fees	One Time	500 + 5% VAT
Visa and Medical Insurance (Inside UAE)	Yearly	6,000 (VAT incl.)
Visa and Medical Insurance (Outside UAE)	Yearly	5,000 (VAT incl.)
Visa and Medical Insurance Renewal	Yearly	3,500 (VAT incl.)
Visa Cancellation Fee (Inside UAE)	One Time	800 (VAT incl.)

Visa Cancellation Fee (Outside UAE)	One Time	2100 (VAT incl.)
Hostel Fee	Monthly	As per chosen accommodation*
Transportation Fees	Monthly	As per chosen service*
Bonafide Letters (Driving License, Embassy, Consulate, Passport Office, Bank, RTA. Etc.)	As Applicable	150 + 5% VAT
Duplicate Transcript charges (per transcript)		100 + 5% VAT
Re-Totaling fee/Re-checking charges		100 + 5% VAT
Degree Certificate changes		150 + 5% VAT
Duplicate Student ID Card		50 + 5% VAT
Duplicate Student Admit Card		50 + 5% VAT
Fines and Penalties		
Late payment fee (Per day)	As Applicable	10 (VAT incl.)
Library Damages	As Applicable	As per incident report
Cheque Dishonor Charges	As Applicable	150 (VAT incl.)

* Hostel Facility - KSK Homes / The Myriad / Yugo Dubailand / Any other

* Transportation - STS Transport/Any Other.

Note - All above mentioned charges are subject to change depending upon factors not under the University’s control and shall depend on any change in Government / Immigration charges; Insurance subscription charges; Accommodation provider revising rentals; Transport Provider revising rates etc.

Tuition & Other Fees

The tuition fees are charged on an annual basis and remains consistent for students who remain continuously enrolled and complete their program. Any instances of program postponement will be handled in accordance with Refund Policy

- Annual fee changes may occur to both tuition fees and other fees; changes in tuition fees will be applied to only new admissions, other fees changes will be applicable to both new admissions and continuing students.
- These changes will take effect at the beginning of each new academic year, and detailed information will be published by the Finance Department beforehand.
- Any change to tuition and other fees shall be announced and broadcasted well in advance on all SIUD communication platforms including the Catalogue of the academic year, prior to the start of each academic year.

Fines & Penalties:

- A late fee payment of AED 10/-per day will be charged if fees are not paid by the due date.
- Any dishonored charges will be subject to a 150 AED fee.
- Exam appearance and access to all University facilities may be restricted in the case that the fee is not paid.
- Any certification including at the completion of a course/program shall be subject to full fees payment as prescribed.

Scholarship / Fee waiver

- The approval of the scholarship is subject to meeting the admission, scholarship criteria and submission of the supporting documents.
- Students who meet the admissions requirements and complete the registration formalities will be offered a fee payment plan in addition to the scholarship / fee waiver granted to them at the time of acceptance.

Bachelor of Technology in Computer Engineering

Degree Structure	Total credits* -153 Professional Studies and General Education - 19; Core-Computer Engineering and Labs- 85, Core Mathematics and Science- 25 Credits, Practical Experience and Project (Internship and Capstone Project) - 9, Technical Electives- 15
Degree Award	Bachelor of Technology in Computer Engineering
Technical Electives/ Concentration	Electives -15 Credits from courses listed under four technical areas: Intelligent Systems, Computational Intelligence, Gaming Design and Development, Emerging Technologies
Duration	8 Semesters
Credits and Experiential Learning	<p>SIU Dubai offers courses carrying 1/2/3 / 4 Credits in Bachelor of Technology in Computer Engineering.</p> <ul style="list-style-type: none"> 1 Credit Classroom Teaching = 15 Contact Hours/ Semester 1 Credit lab = 30 Contact Hours/ Semester Computer Engineering Internship 4-weeks (90-120 hrs.) will be organized during Summer break Capstone Project Phase – I and II will cover ideation, literature review, methodology and orient students to demonstrate competency, values, and professionalism within the given context.
Intake	Two intakes - Fall and Spring
Eligibility	<p>Academic Eligibility: A minimum of 50% marks or equivalent grade in Standard XII (10+2) or an equivalent examination from a recognized High School Board.</p> <p>Lateral Entry Students: Lateral entry into the 2nd year of the Bachelor of Technology in Computer Engineering program is permitted for students who have completed a minimum three-year diploma or equivalent in any branch of engineering or technology with at least 50% marks. This will be applicable from September 2026.</p> <p>English Proficiency:</p> <ol style="list-style-type: none"> UAE MOE High School English Score or equivalent: 80% Students who have studied non-MOE curriculum, not instructed in English, are required to submit international standardized test scores. Students who have studied non-MOE curriculum, instructed in English, are not required to prove English proficiency or not required to obtain scores from international standardized tests. Those who do not fulfil the minimum high school English language requirement of 80% have to submit a minimum score of an international standardized test: IELTS (Academic) 5.0 / Paper-based TOEFL 500 / Internet-based (iBT) TOEFL 61 / Computer-based (CBT) TOEFL 173 <p>Subject-Specific Requirements (Maths, Physics, and Chemistry or Biology): For the Bachelor of Technology in Computer Engineering program, it is compulsory for students to have studied Mathematics, Physics, and with either of Chemistry/ Biology in Higher School Subject with a Passing Score as per MOE curriculum or equivalent (High School Subject Score: 80 in Math and Physics and 1 of Chem/Bio or equivalent). The overall requirement, as per academic eligibility, is that students must have scored a minimum of 80 or equivalent in all three subjects mentioned above.</p>
Selection Procedure	Admissions Committee will shortlist the applications based on the student's previous academic track record, English Proficiency Test, Subject Specific Requirements, Passport copy or valid Emirates ID. SIU Dubai will then issue an admission offer letter to the selected candidates. Upon acceptance of the admissions offer, the student shall complete the document and fee submission formalities within a prescribed time frame to secure admission.
Fee Structure	<p>Fees per year: AED 53550*</p> <p>* VAT @ 5% will be charged extra • ACADEMIC FEES TO BE PAID IN AED/USD</p> <p>Caution Money Deposit (Refundable): AED 4000 (To be paid in the 1st year)</p>

Semester Wise Course/ Study Plan

Semester I				
Course Code	Course Title	Course Category	Credits	Pre-requisite
DBT7680	Mathematics – I	Core-MS	3	None
DBT7684	Physics I*	Core-MS	4	None
DBT7286	Programming and Problem-Solving*	Core	4	None
DBP6001	Academic English	General Education	3	None
DBT7540	Basic Electrical and Electronics Engineering	Core	3	None
TOTAL			17	
Semester II				
Course Code	Course Title	Course Category	Credits	Pre-requisite
DBT7681	Mathematics – II	Core-MS	3	DBT7680
DBT7925	Engineering Graphics Lab*	Core	2	None
DBP6002	UAE: History and Culture	General Education	2	None
DBT7288	Programming in C	Core	3	DBT7684
DBTEC1001	Physics II*	Core-MS	4	None
DBT7689	Statistics and Probability	Core-MS	3	None
DBT7188	Environmental Science	Core-MS	1	None
TOTAL			18	
Summer				
DBT7749	Software Tools for Computer Engineering*	Core	1	None
DBT7694	Chemistry*	Core-MS	4	None
TOTAL			5	
Semester III				
Course Code	Course Title	Course Category	Credits	Pre-requisite
DBT7108	Mathematics -III	Core-MS	3	DBT7681
DBTEC2001	Digital System Design*	Core	4	None
DBT7745	Sensors and Microcontrollers*	Core	4	None
DBT7996	Computer Organization	Core	3	None
DBT7960	Data Structure	Core	3	None
TOTAL			17	

Semester IV				
Course Code	Course Title	Course Category	Credits	Pre-requisite
DBT7675	Discrete Mathematics and Graph Theory	Core	3	DBT7108
DBT7907	Database Management Systems	Core	3	None
DBT7510	Operating Systems*	Core	4	None
DBTEC2002	Software Engineering Principles	Core	3	None
DBTEC2003	Embedded System Design*	Core	4	DBT7745
TOTAL			17	
Summer				
DBT7512	Programming Paradigms	Core	3	None
DBT7908	Computer Networks	Core	3	None
TOTAL			6	
Semester V				
Course Code	Course Title	Course Category	Credits	Pre-requisite
DBTEC3001	Introduction to Artificial Intelligence	Core	3	None
DBT7909	Design and Analysis of Algorithms	Core	3	None
DBT7756	Open Source Technologies*	Core	4	None
DBT7751	Compiler Construction*	Core	4	None
DBT7299	Theory of Computation	Core	3	None
TOTAL			17	
Semester VI				
Course Code	Course Title	Course Category	Credits	Pre-requisite
DBT7287	Optimization Techniques and Algorithms	Core	3	None
DBT2560P	Principles and Practices of Management	Professional	3	None
DBT7253	Data Science	Core	3	DBT7689
DBT7285	Principles of Game Design	Core	3	None
DBT7529	Machine Learning	Core	3	DBTEC3001
DBT6749	Design Thinking	Professional	2	None
TOTAL			17	
Summer				
DBT7098	Cyber security	Core	3	None
DBTEC3002	Computer Engineering Internship 4-weeks (90-120 hrs.)	Practical	3	DBT7228, DBTEC2003, DBT7756
TOTAL			6	

Semester VII				
Course Code	Course Title	Course Category	Credits	Pre-requisite
DBT5525	Research Methodology	Core	3	None
Refer to Annexure – A	Technical Elective 1	Technical Elective	3	Refer to Annexure – A
Refer to Annexure – A	Technical Elective 2	Technical Elective	3	Refer to Annexure – A
Refer to Annexure – A	Technical Elective 3	Technical Elective	3	Refer to Annexure – A
DBT 2646	Entrepreneurship Venture	Professional	3	None
DBTEC 4001	Capstone Project Phase – I	Project	2	None
		TOTAL	17	
Semester VIII				
Catalogue Code	Course Title	Course Category	Credits	Pre-requisite
DBTEC 4002	Capstone Project Phase – II	Project	4	DBTEC 4001, DBT7098, DBT7228, DBTEC2003, DBT7756
DBTEC 4003	Ethics in Computer Engineering	Professional	3	None
Refer to Annexure – A	Technical Elective 4	Technical Elective	3	Refer to Annexure – A
Refer to Annexure – A	Technical Elective 5	Technical Elective	3	Refer to Annexure – A
EBTEC 4004	Technical Communication & Report Writing	Professional	3	None
TOTAL			16	
GRAND TOTAL			153 Credits	

Annexure – A

Technical Electives (5-courses required in Semester VII and VIII)					
Technical Elective Areas	Course Code	Course Title	Course Category	Credits	Pre-requisite
Intelligent Systems	DBT7022	Natural Language Processing and Responsive AI	Technical Elective	3	DBT7529, DBTEC3001
	DBT7266	Deep Learning	Technical Elective	3	DBT7529, DBTEC3001
	DBT7021	Multimodal Machine Learning	Technical Elective	3	DBT7529, DBTEC3001
	DBT3560	Computer Vision	Technical Elective	3	DBT7529, DBTEC3001
	DBT3699	AI Applications in social media	Technical Elective	3	DBT7529, DBTEC3001
	DBT7955	Augmented Reality/ Virtual Reality	Technical Elective	3	DBT7529, DBTEC3001
Computational Intelligence	DBT7284	Power BI	Technical Elective	3	DBT7253, DBT7689

	DBT7292	R Programming	Technical Elective	3	DBT7253, DBT7689
	DBT7255	Data Warehousing and Data Mining	Technical Elective	3	DBT7253, DBT7689
	DBT6850	Python for Data Science	Technical Elective	3	DBT7253, DBT7689
	DBT7281	Open-Source Tools for Data Science	Technical Elective	3	DBT7253, DBT7689
	DBT3612	Data Visualization	Technical Elective	3	DBT7253, DBT7689
Gaming Design and Development	DBT7267	Introduction to Game Development	Technical Elective	3	DBT7285
	DBTEC4001	Computer Graphics	Technical Elective	3	DBT7285
	DBT7275	Modern Platform for Gaming Development	Technical Elective	3	DBT7285
	DBTEC4002	Animation in Game Design	Technical Elective	3	DBT7285
	DBTEC4004	Mobile App Development	Technical Elective	3	DBT7285
	DBT7256	Entrepreneurship in Gaming Development	Technical Elective	3	DBT7285
Emerging Technologies	DBTEC4005	Blockchain Technology	Technical Elective	3	None
	DBTEC4006	Quantum Computing Foundations	Technical Elective	3	None
	DBTEC4007	Renewable Energy Systems for Computing	Technical Elective	3	None
	DBT7948	Introduction to Cloud Computing	Technical Elective	3	None
	DBTEC4008	Cryptography and Data Protection	Technical Elective	3	DBT7098
	DBTEC4009	IoT System Design	Technical Elective	3	DBTEC2003

Bachelor of Business Administration (Honors)

Program Learning Outcomes

The General Education component of the program includes 20 credits and aims to help students gain knowledge of local / regional history and culture and foundational skills necessary for their success in the undergraduate programme.

B.Sc. in Psychology (Honours) Program Learning Outcomes aligned with QF Emirates: Level 7 (Bachelors' Degree)

Program – BBA (Honors)		
Learning Outcomes After successful completion of the BBA (Honours) program, the student will be able to:		Alignment with QF <i>Emirates 2024</i> – Level 6 (Bachelors' Degree)
PLO 1	Demonstrate comprehensive knowledge of core business principles and specialized domains.	Knowledge
PLO 2	Apply analytical, quantitative, and critical thinking skills to solve real-world business problems	Skill
PLO 3	Utilize experiential learning to connect theory with practice through internships, projects, and industry engagement	Skill
PLO 4	Communicate clearly and effectively in professional and cross-cultural business environments	Skill
PLO 5	Display leadership, teamwork, and interpersonal skills essential for organizational success	Skill
PLO 6	Uphold ethical standards, social responsibility, and sustainability in business decision-making	Responsibility

Academic fee and charges

BBA (Honors)										
Weekday: Payment Plan – Academic Fees & Charges										
Sr. No.	Description	Year 1		Year 2		Year 3		Year 4		Total Fees in AED
		Semester 1	Semester 2	Semester 1	Semester 2	Semester 1	Semester 2	Semester 1	Semester 2	
1	Academic Fee	21,000	21,000	21,000	21,000	21,000	21,000	21,000	21,000	1,68,000
2	Graduation Fee	-	-	-	-	-	-	-	500	500
3	Security Deposit (refundable)	4,000	-	-	-	-	-	-	-	4,000
	Total	25,000	21,000	21,000	21,000	21,000	21,000	21,000	21,500	1,72,500

Medical and Visa** charges for overseas students seeking student visa shall be AED 5,000 in the first year, renewable every year for AED 3500/-

Note:

- Application Fee (non-refundable) will be charged @ AED 250 + 10% of Annual Tuition fees per program .
- Any other charges incurred on behalf of the student/ to provide services to the student will be charged at actuals.
- Backlog Fee will be charged additional @ AED 500 + 5% VAT per course as applicable.
- Graduation Fee will be charged additional @ AED 500 + 5% VAT per course as applicable.
- *Medical Insurance and Visa charges (non-refundable) (inclusive of VAT), will be additional @ AED 5000 for overseas students requiring institutional visa, AED 1,000 will be charged in addition to this for students who are within UAE.
- Administrative fees (non-refundable) @ AED 1000 + 5% VAT will have to be paid by the student at the time of application for the cancellation of the admission.
- Administrative fees (non-refundable) @ AED 1000 + 5% VAT will have to be paid by the student at the time of application for the transfer of the admission.
- A late fee will be applicable for all fee payments that are not paid as per the schedule.
- VAT @ 5% will be charged extra on fees except refundable Security Deposit.

Fees Collection:

- Each SIU, Dubai program listed in the catalogue carries a prescribed fee. Students admitted to a program must pay this prescribed fee on or before the date mentioned in the invoice.
- A fee payment schedule is provided upon admission to admitted student and in case of an installment plan the payment should be made by the 10th of each month.
- The University may allow payment of semester fees in up to two instalments per semester upon request.

Annual Installment Plans

- 1st Installment – Before start of Fall Semester
- 2nd Installment – 8th Week of Fall Semester
- 3rd Installment – Before start of Spring Semester
- 4th Installment – 8th Week of Spring Semester

The fees can be paid through any of the following mode of payment :

- Cash
 - Credit or Debit Card
 - Cheque
 - Direct Bank Transfer
 - Website Payment Gateway
 - Online Payment Link,
-
- Payment against Cheque(s) can be done 5 days prior to the date of the presenting the Cheque(s).
 - If paying by bank transfer, all bank charges are to be borne by the remitter. Receipts will be issued upon confirmation of the transfer.
 - Fees can also be paid at the Fee Counter in the university from 9:00 AM to 3:30 PM on all working days, using cash, cheque, or credit / debit card.
 - Students with outstanding dues will have their academic records withheld and will not be allowed to register for the next semester.

Students who pay tuition fees with post-dated cheques must follow the following procedures:

- All Cheque(s) should be made payable to “SYMBIOSIS INTERNATIONAL UNIVERSITY” and the date mentioned on the Cheque(s) should not be later than the 10th of the month.
- In the event of a Cheque being dishonored, the student will be charged with Cheque Return charges as mentioned in the Fees Structure.
- In case of withdrawal from a program by the student, the fee will be processed as per the Refund Policy.
- The rest of the submitted post-dated cheques will be returned.

Program Tuition Fees

Academic Fees	Annual Fees (AED)	Annual Fees In AED (5% VAT incl)
BBA (Honours)	42,000	44,100

Other Fees / Charges	Payment Frequency	Fee - AED
Common Fees		
Application Fee	One Time	1,500 (VAT incl.)
Security Deposit	One Time	4,000
Backlog Fee	As Applicable	500 + 5% VAT
Graduation Fees	One Time	500 + 5% VAT
Visa and Medical Insurance (Inside UAE)	Yearly	6,000 (VAT incl.)
Visa and Medical Insurance (Outside UAE)	Yearly	5,000 (VAT incl.)
Visa and Medical Insurance Renewal	Yearly	3,500 (VAT incl.)
Visa Cancellation Fee (Inside UAE)	One Time	800 (VAT incl.)

Visa Cancellation Fee (Outside UAE)	One Time	2100 (VAT incl.)
Hostel Fee	Monthly	As per chosen accommodation*
Transportation Fees	Monthly	As per chosen service*
Bonafide Letters (Driving License, Embassy, Consulate, Passport Office, Bank, RTA. Etc.)	As Applicable	150 + 5% VAT
Duplicate Transcript charges (per transcript)		100 + 5% VAT
Re-Totalling fee/Re-checking charges		100 + 5% VAT
Degree Certificate changes		150 + 5% VAT
Duplicate Student ID Card		50 + 5% VAT
Duplicate Student Admit Card		50 + 5% VAT
Fines and Penalties		
Late payment fee (Per day)	As Applicable	10 (VAT incl.)
Library Damages	As Applicable	As per incident report
Cheque Dishonor Charges	As Applicable	150 (VAT incl.)

* Hostel Facility - KSK Homes / The Myriad / Yugo Dubailand / Any other

* Transportation - STS Transport/Any Other.

Note - All above mentioned charges are subject to change depending upon factors not under the University's control and shall depend on any change in Government / Immigration charges; Insurance subscription charges; Accommodation provider revising rentals; Transport Provider revising rates etc.

Tuition & Other Fees

The tuition fees are charged on an annual basis and remains consistent for students who remain continuously enrolled and complete their program. Any instances of program postponement will be handled in accordance with Refund Policy

- Annual fee changes may occur to both tuition fees and other fees; changes in tuition fees will be applied to only new admissions, other fees changes will be applicable to both new admissions and continuing students.
- These changes will take effect at the beginning of each new academic year, and detailed information will be published by the Finance Department beforehand.
- Any change to tuition and other fees shall be announced and broadcasted well in advance on all SIUD communication platforms including the Catalogue of the academic year, prior to the start of each academic year.

Fines & Penalties:

- A late fee payment of AED 10/-per day will be charged if fees are not paid by the due date.
- Any dishonored charges will be subject to a 150 AED fee.
- Exam appearance and access to all University facilities may be restricted in the case that the fee is not paid.
- Any certification including at the completion of a course/program shall be subject to full fees payment as prescribed.

Scholarship / Fee waiver

- The approval of the scholarship is subject to meeting the admission, scholarship criteria and submission of the supporting documents.
- Students who meet the admissions requirements and complete the registration formalities will be offered a fee payment plan in addition to the scholarship / fee waiver granted to them at the time of acceptance.

Bachelor of Business Administration (Honors)

Degree Structure	Total credits* -149 Core-56, Electives-32, Advance Elective-8, General Education-20, Internship-6, Project-8, Dissertation-12, Industry Collaboration Course-4, Open Elective-3	
Concentration/s	Students will have four options: <ul style="list-style-type: none">• Finance• Marketing• Logistics & Supply Chain Management• Human Resource Management	
Degree Award	<ul style="list-style-type: none">• BBA Finance• BBA Marketing• BBA Logistics & Supply Chain Management• BBA Human Resource Management	<ul style="list-style-type: none">• BBA Honors - Finance• BBA Honors - Marketing• BBA Honors - Logistics & Supply Chain Management• BBA Honors - Human Resource

Duration	<ul style="list-style-type: none">• 8 Semesters / 6 Semesters with three-year exit (BBA) / (BBA (H)
----------	-------------------------------------------------------------------------------------------------------------------

Credits and Experiential Learning	SIU Dubai offers courses carrying 2/ 4 / 3 / 6 / 8 / 12 Credits in the BBA Honors Program. Each Credit is equivalent to 15 Classroom Teaching Hours. Each course also contains up to 20% of hours conducted using Experiential Learning methods.
-----------------------------------	--------------------------------------------------------------------------------------------------------------------------------------------------------------------------------------------------------------------------------------------------

Eligibility	<p>A minimum of 50% marks or equivalent grade in Standard XII (10+2) or an equivalent examination from a recognized High School Board.</p> <p>English Proficiency:</p> <ol style="list-style-type: none">1. UAE MOE High School English Score or equivalent: 80%2. Students who have studied non-MOE curriculum, not instructed in English, are required to submit international standardized test scores.3. Students who have studied non-MOE curriculum, instructed in English, are not required to prove English proficiency or not required to obtain scores from international standardized tests. Those who do not fulfil the minimum high school English language requirement of 80% have to submit a minimum score of an international standardized test: IELTS (Academic) 5.0 / Paper-based TOEFL 500 / Internet-based (iBT) TOEFL 61 / Computer-based (CBT) TOEFL 173
-------------	-----------------------------------------------------------------------------------------------------------------------------------------------------------------------------------------------------------------------------------------------------------------------------------------------------------------------------------------------------------------------------------------------------------------------------------------------------------------------------------------------------------------------------------------------------------------------------------------------------------------------------------------------------------------------------------------------------------------------------------------------------------------------------------------------------------------------------------------------------------------------------------------------------------------

Selection Procedure	The Admission Committee will shortlist the applications based on the student's previous academic track record, English Proficiency Test, Statement of Purpose, Letters of Recommendation, Passport copy and CV (Curriculum Vitae). Shortlisted candidates will be invited for a personal interview. SIU, Dubai will then declare the merit list of the selected candidates.
---------------------	-----------------------------------------------------------------------------------------------------------------------------------------------------------------------------------------------------------------------------------------------------------------------------------------------------------------------------------------------------------------------------

Fee Structure	<p>Fees per year: AED 42000*</p> <p>* VAT @ 5% will be charged extra • ACADEMIC FEES TO BE PAID IN AED/USD</p> <p>Caution Money Deposit (Refundable): AED 4000 (To be paid in the 1st year)</p>
---------------	------------------------------------------------------------------------------------------------------------------------------------------------------------------------------------------------------------

Courses*	General Education <ul style="list-style-type: none">• Fundamentals of IT & Digital Skills• Arabic Conversation Skills• Communication & Presentation Skills• Entrepreneurship, Innovation, and Sustainability• UAE: History and Culture• Design Thinking• Cross Cultural Management• UAE History and Culture
----------	---------------------------------------------------------------------------------------------------------------------------------------------------------------------------------------------------------------------------------------------------------------------------------------------------------------------------------------------------------------------------------------------------------

*Note: The list of courses may be periodically revised to assure contemporary relevance

Core Courses

- Principles of Management
- Financial Accounting
- Business Economics
- Business Finance
- Organizational Behaviour
- Corporate Governance and Business Ethics
- Business Research Methods
- Operation Research
- Statistics for Business
- Strategic Management
- Project Management
- International Business and Trade
- Systematic Review and Ethics
- Data Analysis Tools and Techniques for Researchers

Open Elective

- Predictive Analytics
- Data Visualisation
- Digital Branding Strategy
- Psychological Assessments
- Google Analytics
- Creativity and Innovation
- Blockchain Technology
- Python Programming

Finance Elective Courses

- Financial Analytics
- Security Analysis and Portfolio Management
- Foreign Exchange Management
- Financial Derivatives
- Banking and Financial Services
- Fintech and Blockchain
- Mergers & Acquisitions
- Sustainable Finance and ESG Investing
- Behavioral Finance
- Risk Management
- Entrepreneurial Finance

Logistics and Supply Chain Management Elective Courses

- Logistics and Distribution Management
- Inventory and Warehouse Management
- Reverse Logistics and Return Management
- Supply Chain Management
- Cold Chain Logistics
- Supply Chain Analytics
- Procurement and Sourcing Strategies
- Risk Management in Supply Chains
- Customs Regulations and Trade Compliance
- Maritime and Port Logistics
- Industry Trends in Logistics and Supply Chain

Marketing Elective Courses

- Digital Marketing
- Green Marketing and Sustainability
- Social Media Marketing
- Sales and Distribution Management
- Retail Marketing
- Marketing Analytics
- Brand Management
- Consumer Behaviour
- International Marketing
- Luxury and Lifestyle Marketing
- Sports and Entertainment Marketing

Human Resources Management Elective Courses

- HR Analytics
- Emotional Intelligence and Managerial Effectiveness
- Talent Acquisition and Recruitment
- Training and Development
- Performance Management
- Workplace Diversity and Inclusion
- Leadership and Team Management
- Organizational Development and Change Management
- Labor Laws and Industrial Relations
- Strategic Human Resource Management
- Future of Work and Agile HR

Advance Electives in Finance

- Investor Behavior & Financial Decision Making
- Contemporary Issues in Banking & Insurance
- Global Economics
- Research in Financial Markets and Derivatives

Advance Electives in Logistics and Supply Chain Management

- Transport Economics and Freight Management
- Reverse Logistics and Circular Supply Chains
- Advanced Demand Forecasting and Inventory Strategies

Advance Electives in Marketing

- Product Innovation and New Market Development
- Integrated Marketing Communications
- Consumer Insights and Market Intelligence

Advance Electives in Human Resource Management

- People Analytics and Strategic Workforce Planning
- HR Tech and Digital HRM Platforms
- Organizational Change and Transformation

Semester Wise Course/ Study Plan

Semester I			
Catalogue Code	Course Title	Course Category	Credits
DBBA101	Principles of Management	Core	4
DBBA102	Financial Accounting	Core	4
DBBA103	Business Economics	Core	4
DGEN101	Fundamentals of IT & Digital Skills	General Education	3
DGEN102	Arabic Conversation Skills	General Education	3
		TOTAL	18
Semester II			
Catalogue Code	Course Title	Course Category	Credits
DBBA204	Business Finance	Core	4
DBBA205	Organizational Behaviour	Core	4
DBBA206	Corporate Governance and Business Ethics	Core	4
DGEN203	Communication & Presentation Skills	General Education	3
DBT2001	Entrepreneurship, Innovation, and Sustainability	General Education	3
		TOTAL	18
Semester III			
Catalogue Code	Course Title	Course Category	Credits
DBBA301	Business Research Methods	Core	4
DBBA302	Operation Research	Core	4
Refer Annexure A/B/C/D	Elective 1 (FIN/MKT/HRM/LSCM) *	Elective	4
DT8732	Design Thinking	General Education	3
DT2276	Cross Cultural Management	General Education	3
DBT6002	UAE History and Culture	General Education	2
		TOTAL	20
*Elective courses under each concentration will be offered subject to student interest; in the absence of sufficient interest in a particular concentration, it may not be offered. Elective courses in respective concentration will be offered if there are at least 5-enrolments.			
Semester IV			
Catalogue Code	Course Title	Course Category	Credits
DBBA403	Statistics for Business	Core	4
DBBA404	Strategic Management	Core	4
Refer Annexure A/B/C/D	Elective 2 (FIN/MKT/HRM/LSCM)	Elective	4
Refer Annexure A/B/C/D	Elective 3 (FIN/MKT/HRM/LSCM)	Elective	4
DBBA405	Lean Six Sigma**	Industry Collaboration course	4
		TOTAL	20
** This course is offered in collaboration with Industry partners. Upon completion, students will be eligible to appear for the internationally recognized professional certification like Lean Six Sigma Green Belt Certification. Note: The specific certification may vary depending on the partnering industry body, allowing flexibility in aligning with globally accepted standards and institutional partnerships.			

Semester V			
Catalogue Code	Course Title	Course Category	Credits
DBBA501	Project Management	Core	4
Refer Annexure A/B/C/D	Elective 4 (FIN/MKT/HRM/LSCM)	Elective	4
Refer Annexure A/B/C/D	Elective 5 (FIN/MKT/HRM/LSCM)	Elective	4
Refer Annexure A/B/C/D	Elective 6 (FIN/MKT/HRM/LSCM)	Elective	4
Refer Annexure E	Open Elective (Choose 1)	Open Elective	3
		TOTAL	19
Summer Program			
Catalogue Code	Course Title	Course Category	Credits
DBINT502	Internship	Internship	6
		TOTAL	6
Semester VI			
Catalogue Code	Course Title	Course Category	Credits
DBBA601	International Business and Trade	Core	4
Refer Annexure A/B/C/D	Elective 7 (FIN/MKT/HRM/LSCM)	Elective	4
Refer Annexure A/B/C/D	Elective 8 (FIN/MKT/HRM/LSCM)	Elective	4
DBPR603	Project		8
		TOTAL	20
Semester VII (For BBA Honors)			
Catalogue Code	Course Title	Course Category	Credits
DBBA 701	Systematic Review and Ethics	Core	4
DBBA 702	Data Analysis Tools and Techniques for Researchers	Core	4
Refer Annexure F	Advanced Elective 1 for Honors	Advance Elective	4
Refer Annexure F	Advanced Elective 2 for Honors	Advance Elective	4
		TOTAL	16
Note: Choose any two Advance Elective from the courses listed in Annexure F.			
Semester VIII (For BBA Honors)			
Catalogue Code	Course Title	Course Category	Credits
DBBAD 801	Dissertation	Dissertation	12
		TOTAL	12

Annexure A: BBA Finance Elective Courses (Choose any 8 courses)

Catalogue Code	Course Title	Course Category	Credits
DBFIN310	Financial Analytics	Elective	4
DBFIN311	Security Analysis and Portfolio Management	Elective	4
DBFIN312	Foreign Exchange Management	Elective	4
DBFIN313	Financial Derivatives	Elective	4
DBFIN314	Banking and Financial Services	Elective	4
DBFIN315	Fintech and Blockchain	Elective	4
DBFIN316	Mergers & Acquisitions	Elective	4
DBFIN317	Sustainable Finance and ESG Investing	Elective	4
DBFIN318	Behavioural Finance	Elective	4
DBFIN319	Risk Management	Elective	4
DBFIN320	Entrepreneurial Finance	Elective	4

Annexure B: BBA Logistics and Supply Chain Management Elective Courses (Choose any 8 courses)

Catalogue Code	Course Title	Course Category	Credits
DBLSC310	Logistics and Distribution Management	Elective	4
DBLSC311	Inventory and Warehouse Management	Elective	4
DBLSC312	Reverse Logistics and Return Management	Elective	4
DBLSC313	Supply Chain Management	Elective	4
DBLSC314	Cold Chain Logistics	Elective	4
DBLSC315	Supply Chain Analytics	Elective	4
DBLSC316	Procurement and Sourcing Strategies	Elective	4
DBLSC317	Risk Management in Supply Chains	Elective	4
DBLSC318	Customs Regulations and Trade Compliance	Elective	4
DBLSC319	Maritime and Port Logistics	Elective	4
DBLSC320	Industry Trends in Logistics and Supply Chain	Elective	4

Annexure C: BBA Marketing Elective Courses (Choose any 8 courses)

Catalogue Code	Course Title	Course Category	Credits
DBMKT310	Digital Marketing	Elective	4
DBMKT311	Green Marketing and Sustainability	Elective	4
DBMKT312	Social Media Marketing	Elective	4
DBMKT313	Sales and Distribution Management	Elective	4
DBMKT314	Retail Marketing	Elective	4
DBMKT315	Marketing Analytics	Elective	4
DBMKT316	Brand Management	Elective	4
DBMKT317	Consumer Behaviour	Elective	4
DBMKT318	International Marketing	Elective	4
DBMKT319	Luxury and Lifestyle Marketing	Elective	4
DBMKT320	Sports and Entertainment Marketing	Elective	4

Annexure D: BBA Human Resources Management Elective Courses (Choose any 8 courses)

Catalogue Code	Course Title	Course Category	Credits
DBHR310	HR Analytics	Elective	4
DBHR311	Emotional Intelligence and Managerial Effectiveness	Elective	4
DBHR312	Talent Acquisition and Recruitment	Elective	4
DBHR313	Training and Development	Elective	4
DBHR314	Performance Management	Elective	4
DBHR315	Workplace Diversity and Inclusion	Elective	4
DBHR316	Leadership and Team Management	Elective	4
DBHR317	Organizational Development and Change Management	Elective	4
DBHR318	Labor Laws and Industrial Relations	Elective	4
DBHR319	Strategic Human Resource Management	Elective	4
DBHR320	Future of Work and Agile HR	Elective	4

Annexure E: Open Electives (Choose any 1) *

Catalogue Code	Course Title	Course Category	Credits
DBTE7022	Predictive Analytics	Open Elective	3
DBT3612	Data Visualisation	Open Elective	3
DBP5021	Digital Branding Strategy	Open Elective	3
DBPSY2011	Psychological Assessments	Open Elective	3
DBITS-E2	Google Analytics	Open Elective	3
DBDT2341	Creativity and Innovation	Open Elective	3
DBITS-E3	Blockchain Technology	Open Elective	3
DBITS-E4	Python Programming	Open Elective	3
DBITS-E5	Advanced Excel: Tools for Business and Analytics	Open Elective	3
DBCOM2015	Smart Accounting Solutions & Reporting	Open Elective	3

(The Open Elective list is subject to revision based on the recommendations and feedback of the Academic Committee.)

(The above Open Elective course(s) are offered by programs other than BBA at SIUD and are made available to BBA students to encourage multidisciplinary learning. Enrolment is subject to availability and approval by the respective program and the Academic Committee.)

Annexure F: Advance Elective Courses (Choose any 2) *

Catalogue Code	Course Title	Course Category	Credits	Concentration
DBFN-AE1	Investor Behavior & Financial Decision Making	Advance Elective	4	Finance
DBFN-AE1	Contemporary Issues in Banking & Insurance	Advance Elective	4	Finance
DBFN-AE2	Global Economics	Advance Elective	4	Finance
DBFN-AE3	Research in Financial Markets and Derivatives	Advance Elective	4	Finance
DBMK-AE1	Product Innovation and New Market Development	Advance Elective	4	Marketing
DBMK-AE2	Integrated Marketing Communications	Advance Elective	4	Marketing
DBMK-AE3	Consumer Insights and Market Intelligence	Advance Elective	4	Marketing
DBLSC-AE1	Transport Economics and Freight Management	Advance Elective	4	Logistics and Supply Chain Management
DBLSC-AE2	Reverse Logistics and Circular Supply Chains	Advance Elective	4	Logistics and Supply Chain Management
DBLSC-AE3	Advanced Demand Forecasting and Inventory Strategies	Advance Elective	4	Logistics and Supply Chain Management
DBHR-AE1	People Analytics and Strategic Workforce Planning	Advance Elective	4	Human Resource Management
DBHR-AE2	HR Tech and Digital HRM Platforms	Advance Elective	4	Human Resource Management
DBHR-AE3	Organizational Change and Transformation	Advance Elective	4	Human Resource Management

***The courses will be delivered according to SIU-Dubai's timetable and offered if there are at least 5-enrollments for the course.**

Fee Refund Policy

Policy for Refund of Fees on account of Cancellation of Admission for Undergraduate Programs.

Sr. No.	Cancellation/ Withdrawal of Admissions Before Commencement of the Program	Cancellation/Withdrawal of Admissions After Commencement of the Program	
		Within 2 weeks from Commencement o f the Program	After 2 weeks from Commencement of the Program
1	Full refund of fees except Application Fees +10 % Annual Tuition fees which are Non-Refundable.	50% of the Academic Fees will be deducted and remaining amount will be refunded.	100% of the Academic Fees will be deducted.
2	Administrative fees of AED 1000 + 5% VAT will have to be paid by the student at the time of application for the cancellation of the admission.	Administrative fees of AED 1000 + 5% VAT will have to be paid by the student at the time of application for the cancellation of the admission.	Administrative fees of AED 1000 + 5% VAT will have to be paid by the student at the time of application for the cancellation of the admission.

Notes:

- If the student does not attend any class for 3 consecutive weeks from the commencement of the program, SIU Dubai has the right to cancel admission and the student's visa; no fee refund will be applicable, and visa cancellation charges will have to be paid by the student.
- Application Fees are Non-Refundable.
- No refund will be applicable if a student transfers application to the next intake and decides to cancel thereafter.
- Refundable amounts are calculated based on the date that the withdrawal form is submitted to Student Services, regardless of the student's enrollment status, attendance history, or joining date.
- Refunds will be processed within 45 to 60 days after the withdrawal and supporting documentation are submitted.

Grading System

Symbiosis International University, Dubai, will follow Cumulative Grade Point Average (CGPA) systems for all the programs. Grading system was modified on January 10, 2025 and implemented from Spring 2025 onwards to align standards with parent campus, local peers, and to accurately recognize student performance.

- All SIU Dubai programs adhere to the distribution of Continuous Assessments and Semester End Examinations prescribed in their respective approved program structures.
- Mandatory non-credit courses shall not be considered for computation of GPA/ CGPA. The grade P (Pass) will be printed on the grade sheet after the student passes the course. This course is evaluated on a 100% continuous basis.
- The assessment of the student for each examination is done based on absolute grading.
- Students who have not appeared for course assessments or examinations will be marked Absent with a Grade 'AB'.
- The percentage of marks attained in a course will be converted to grades and grade points based on the scale below. The maximum Grade Point (GP) for each course is 10.00, corresponding to A+. For all courses, a student is required to pass Continuous Assessment (CA) and Semester End examinations (SE) separately with a minimum Grade Point of 5.0 for Graduate programs and Undergraduate programs corresponding to Grade D. Students securing less than D in any course will be declared FAIL in that particular head (CA or SE)

Percentage of Marks	Letter Grade	Grade Points
95 and above	A+	10.0
90-94.99%	A	9.0
85-89.99%	B+	8.5
80-84.99%	B	8.0
70-79.99%	C+	7.0
60-69.99%	C	6.0
50-59.99%	D	5.0
Below 50%	F	0
Absent	AB	0

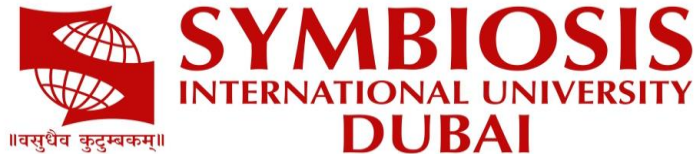
Evaluation and Student Progress:

- Students admitted to SIU, Dubai's 4-year (eight semesters) degree program, are allowed to keep term for two years from the date of admission beyond the normal period of the program, i.e., a student joining a four-year program must complete the program in six years from the date of admission. A student will attend classes of all the years with their batch. If a student does not receive the necessary passing grades; the following rule will be applicable as per the total number of semesters in a program:
- They cannot appear for the Semester End Examination of Semester 5 if they have a CGPA of less than 5.00 up to Semester 2.
- They cannot appear for the Semester End Examination of Semester 6 if they have a CGPA less than 5.00 up to Semester 3.
- They cannot appear for the Semester End Examination of Semester 7 if they have a CGPA less than 5.00 up to Semester 4.
- They cannot appear for the Semester End Examination of Semester 8 if they have a CGPA of less than 5.00 up to Semester 5.
- However, a student eligible to appear for a later semester will also be permitted to appear for all the previous semesters, irrespective of the (Allowed to Keep Term) ATKT rule applicable to that Semester. (e.g., a student with a CGPA less than 5.00 at the end of Semester 4 but a CGPA greater than 5.00 at the end of Semester 5 will be eligible to appear for semester-end examinations of Semester 7 and Semester 8).





Legacy of more than 50 years of Excellence in Quality Education



Block 14
Dubai Knowledge Park
United Arab Emirates (U.A.E)
Email: admissions@siu-dubai.ac.ae

